

For Research Use Only

# PRMT1 Monoclonal antibody, PBS Only

Catalog Number: 68365-1-PBS



## Basic Information

<b>Catalog Number:</b> 68365-1-PBS	<b>GenBank Accession Number:</b> BC019268	<b>Purification Method:</b> Protein G purification
<b>Size:</b> 100ug, Concentration: 1mg/ml by Nanodrop;	<b>GeneID (NCBI):</b> 3276	<b>CloneNo.:</b> 1G8E2
<b>Source:</b> Mouse	<b>UNIPROT ID:</b> Q99873	
<b>Isotype:</b> IgG1	<b>Full Name:</b> protein arginine methyltransferase 1	
<b>Immunogen Catalog Number:</b> AG29063	<b>Calculated MW:</b> 42 kDa	
	<b>Observed MW:</b> 38-42 kDa	

## Applications

**Tested Applications:**  
WB, IF/ICC, FC (Intra), Indirect ELISA

**Species Specificity:**  
human, mouse, rat

## Background Information

PRMT1, the major protein arginine methyltransferase in mammals, catalyzes monomethylation and asymmetric dimethylation of arginine side chains in proteins. Human PRMT1 is encoded by the PRMT1 gene located on chromosome 19 (19q13.3) and composed of 12 exons and 11 introns. At the protein level, human PRMT1 shares a high degree of homology with the different members of the PRMT family that is conserved in eukaryotes. Phylogenetic studies based on the methyltransferase domain highlighted that PRMT1 is closely related to PRMT8.

## Storage

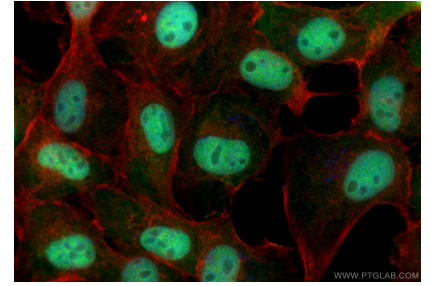
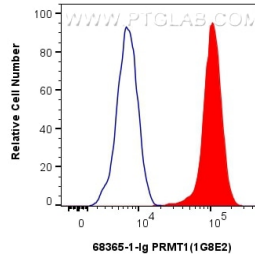
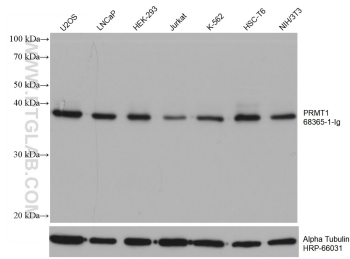
**Storage:**  
Store at -80°C.

**Storage Buffer:**  
PBS Only

For technical support and original validation data for this product please contact:  
T: 1 (888) 4PTGLAB (1-888-478-4522) (toll free in USA), or 1(312) 455-8498 (outside USA)      E: proteintech@ptglab.com  
W: ptglab.com

**This product is exclusively available under Proteintech Group brand and is not available to purchase from any other manufacturer.**

## Selected Validation Data



Various lysates were subjected to SDS PAGE followed by western blot with 68365-1-Ig (PRMT1 antibody) at dilution of 1:50000 incubated at room temperature for 1.5 hours. The membrane was stripped and reblotted with HRP-conjugated Alpha Tubulin Monoclonal antibody (HRP-66031) as loading control. This data was developed using the same antibody clone with 68365-1-PBS in a different storage buffer formulation.

$1 \times 10^6$  HeLa cells were intracellularly stained with 0.2 ug PRMT1 Monoclonal antibody (68365-1-Ig, Clone:1G8E2) and CoraLite®488-Conjugated AffiniPure Goat Anti-Mouse IgG(H+L) (SA00013-1)(red), or 0.2 ug Mouse IgG1 isotype control Mouse McAb (66360-1-Ig, Clone: 1F8D3) (blue). Cells were fixed and permeabilized with True-Nuclear Transcription Factor Buffer Set. This data was developed using the same antibody clone with 68365-1-PBS in a different storage

Immunofluorescent analysis of (4% PFA) fixed A431 cells using PRMT1 antibody (68365-1-Ig, Clone: 1G8E2) at dilution of 1:1000 and CoraLite®488-Conjugated Goat Anti-Mouse IgG(H+L) (SA00013-1), CL594-phalloidin (red). This data was developed using the same antibody clone with 68365-1-PBS in a different storage buffer formulation.