

For Research Use Only

ATPAF2 Monoclonal antibody, PBS Only (Capture)

Catalog Number: 68351-1-PBS



Basic Information

Catalog Number: 68351-1-PBS	GenBank Accession Number: BC032126	Purification Method: Protein G purification
Size: 100ug, Concentration: 1mg/ml by Nanodrop;	GeneID (NCBI): 91647	CloneNo.: 1H9A9
Source: Mouse	UNIPROT ID: Q8N5M1	
Isotype: IgG1	Full Name: ATP synthase mitochondrial F1 complex assembly factor 2	
Immunogen Catalog Number: AG29065	Calculated MW: 289 aa, 33 kDa	
	Observed MW: ~30 kDa	

Applications

Tested Applications:
WB, IHC, IF/ICC, Cytometric bead array, Indirect ELISA

Species Specificity:
human, mouse, rat

Product Information

68351-1-PBS targets ATPAF2 as part of a matched antibody pair:

MP50625-1: 68351-1-PBS capture and 68351-2-PBS detection (validated in Cytometric bead array)

Unconjugated mouse monoclonal antibody pair in PBS only (BSA and azide free) storage buffer at a concentration of 1 mg/mL, ready for conjugation.

This conjugation ready format makes antibodies ideal for use in many applications including: ELISAs, multiplex assays requiring matched pairs, mass cytometry, and multiplex imaging applications. Antibody use should be optimized by the end user for each application and assay.

Background Information

ATP synthase mitochondrial F1 complex assembly factor 2 (ATPAF2) also name as ATP12 and ATP12p, is an essential house keeping protein. ATPAF2 is an assembly factor for the F1 component of mitochondrial ATP synthase. This protein binds specifically to the F1 alpha subunit and is thought to prevent this subunit from forming nonproductive homooligomers during enzyme assembly. The calculated MW is 33 kDa, 68351-1-Ig can detect bands around 30 kDa and 50 kDa, the larger band may correspond to dimer or complex form. (PMID: 1826907, 11410595)

Storage

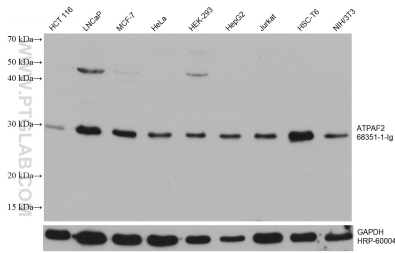
Storage:
Store at -80°C.

Storage Buffer:
PBS Only

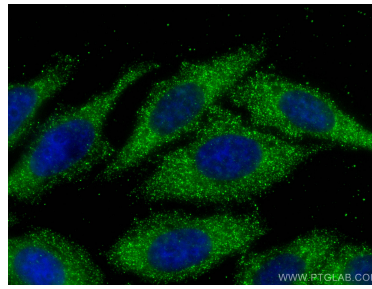
For technical support and original validation data for this product please contact:
T: 1 (888) 4PTGLAB (1-888-478-4522) (toll free in USA), or 1(312) 455-8498 (outside USA) E: proteintech@ptglab.com W: ptglab.com

This product is exclusively available under Proteintech Group brand and is not available to purchase from any other manufacturer.

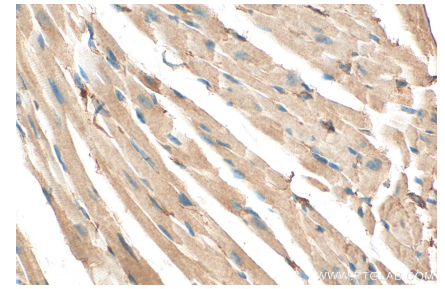
Selected Validation Data



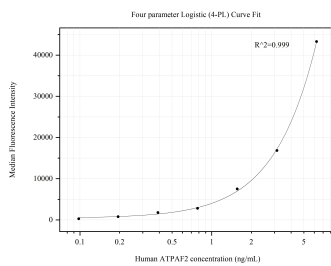
Various lysates were subjected to SDS PAGE followed by western blot with 68351-1-Ig (ATPAF2 antibody) at dilution of 1:5000 incubated at room temperature for 1.5 hours. The membrane was stripped and reblotted with HRP-conjugated GAPDH Monoclonal antibody (HRP-60004) as loading control. This data was developed using the same antibody clone with 68351-1-PBS in a different storage buffer formulation.



Immunofluorescent analysis of (-20°C Ethanol) fixed HepG2 cells using ATPAF2 antibody (68351-1-Ig, Clone: 1H9A9) at dilution of 1:800 and CoraLite®488-Conjugated AffiniPure Goat Anti-Mouse IgG(H+L). This data was developed using the same antibody clone with 68351-1-PBS in a different storage buffer formulation.



Immunohistochemical analysis of paraffin-embedded mouse heart tissue slide using 68351-1-Ig (ATPAF2 antibody) at dilution of 1:500 (under 40x lens). Heat mediated antigen retrieval with Tris-EDTA buffer (pH 9.0). This data was developed using the same antibody clone with 68351-1-PBS in a different storage buffer formulation.



Cytometric bead array standard curve of MP50625-1, ATPAF2 Monoclonal Matched Antibody Pair, PBS Only. Capture antibody: 68351-1-PBS. Detection antibody: 68351-2-PBS. Standard: Ag29065. Range: 0.098-6.25 ng/mL.