

For Research Use Only

RABL3 Monoclonal antibody, PBS Only



Catalog Number: 68342-1-PBS

Basic Information

Catalog Number:

68342-1-PBS

Size:

100ug, Concentration: 1 mg/ml by Nanodrop;

Source:

Mouse

Isotype:

IgG1

Immunogen Catalog Number:

AG33137

GenBank Accession Number:

BC020832

GeneID (NCBI):

285282

UNIPROT ID:

Q5HYI8

Full Name:

RAB, member of RAS oncogene family-like 3

Calculated MW:

236 aa, 26 kDa

Observed MW:

26 kDa

Purification Method:

Protein G purification

CloneNo.:

2H3E1

Applications

Tested Applications:

WB, IF, Indirect ELISA

Species Specificity:

human

Background Information

The gene of Rbl3 is located on 3q13.3 and is composed of eight exons and seven introns. It is a member of the Rab subfamily, the largest group in the Ras superfamily of small guanosine triphosphatases (GTPases).

Storage

Storage:

Store at -80°C.

Storage Buffer:

PBS Only

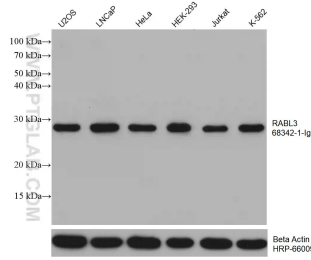
For technical support and original validation data for this product please contact:

T: 1 (888) 4PTGLAB (1-888-478-4522) (toll free in USA), or 1(312) 455-8498 (outside USA)

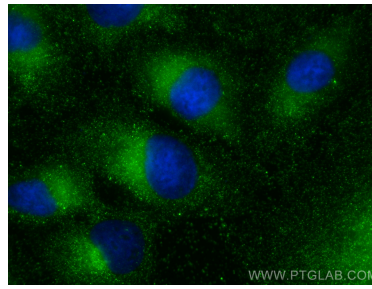
E: proteintech@ptglab.com
W: ptglab.com

This product is exclusively available under Proteintech Group brand and is not available to purchase from any other manufacturer.

Selected Validation Data



Various lysates were subjected to SDS PAGE followed by western blot with 68342-1-Ig (RABL3 antibody) at dilution of 1:10000 incubated at room temperature for 1.5 hours. The membrane was stripped and reblotted with HRP-conjugated Beta Actin Monoclonal antibody (HRP-66009) as loading control. This data was developed using the same antibody clone with 68342-1-PBS in a different storage buffer formulation.



Immunofluorescent analysis of (-20°C Methanol) fixed A549 cells using RABL3 antibody (68342-1-Ig, Clone: 2H3E1) at dilution of 1:800 and CoraLite®488-Conjugated AffiniPure Goat Anti-Mouse IgG(H+L). This data was developed using the same antibody clone with 68342-1-PBS in a different storage buffer formulation.