

For Research Use Only

CCS Monoclonal antibody, PBS Only

Catalog Number: 68341-1-PBS

Featured Product



Basic Information

Catalog Number:

68341-1-PBS

Size:

100ug, Concentration: 1 mg/ml by Nanodrop;

Source:

Mouse

Isotype:

IgG2a

Immunogen Catalog Number:

AG18860

GenBank Accession Number:

BC105016

GeneID (NCBI):

9973

UNIPROT ID:

O14618

Full Name:

copper chaperone for superoxide dismutase

Calculated MW:

274 aa, 29 kDa

Observed MW:

32 kDa

Purification Method:

Protein A purification

CloneNo.:

3F5E5

Applications

Tested Applications:

WB, IF, IHC, Indirect ELISA

Species Specificity:

Human, mouse, rat

Background Information

Copper chaperone for superoxide dismutase (CCS) is a soluble factor that converts copper into copper-zinc superoxide dismutase (SOD1). CCS and SOD1 interact directly in vivo and in vitro, and this interaction is mediated by homologous domains in each protein. CCS not only interacts with wild-type SOD1 but also interacts with SOD1 containing common missense mutations, resulting in FALS.

Storage

Storage:

Store at -80°C.

Storage Buffer:

PBS Only

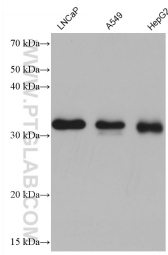
For technical support and original validation data for this product please contact:

T: 1 (888) 4PTGLAB (1-888-478-4522) (toll free in USA), or 1(312) 455-8498 (outside USA)

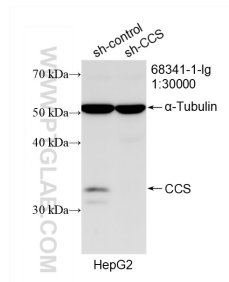
E: proteintech@ptglab.com
W: ptglab.com

This product is exclusively available under Proteintech Group brand and is not available to purchase from any other manufacturer.

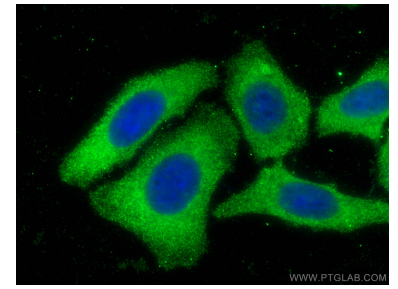
Selected Validation Data



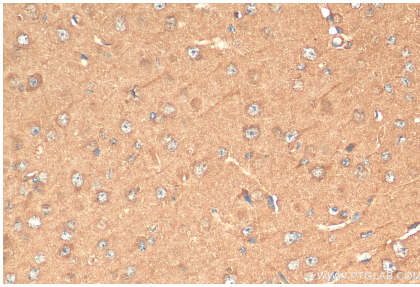
Various lysates were subjected to SDS PAGE followed by western blot with 68341-1-Ig (CCS antibody) at dilution of 1:10000 incubated at room temperature for 1.5 hours. This data was developed using the same antibody clone with 68341-1-PBS in a different storage buffer formulation.



WB result of CCS antibody (68341-1-Ig; 1:30000; incubated at room temperature for 1.5 hours) with sh-Control and sh-CCS transfected HepG2 cells. This data was developed using the same antibody clone with 68341-1-PBS in a different storage buffer formulation.



Immunofluorescent analysis of (-20°C Methanol) fixed HepG2 cells using CCS antibody (68341-1-Ig, Clone: 3F5E5) at dilution of 1:1000 and CoraLite®488-Conjugated AffiniPure Goat Anti-Mouse IgG(H+L). This data was developed using the same antibody clone with 68341-1-PBS in a different storage buffer formulation.



Immunohistochemical analysis of paraffin-embedded mouse brain tissue slide using 68341-1-Ig (CCS antibody) at dilution of 1:200 (under 40x lens). Heat mediated antigen retrieval with Tris-EDTA buffer (pH 9.0). This data was developed using the same antibody clone with 68341-1-PBS in a different storage buffer formulation.