

For Research Use Only

TXNDC9 Monoclonal antibody, PBS Only



Catalog Number: 68335-1-PBS

Featured Product

Basic Information

Catalog Number: 68335-1-PBS	GenBank Accession Number: BC005968	Purification Method: Protein G purification
Size: 100ug, Concentration: 1mg/ml by Nanodrop;	GeneID (NCBI): 10190	CloneNo.: 2A10G3
Source: Mouse	UNIPROT ID: O14530	
Isotype: IgG1	Full Name: thioredoxin domain containing 9	
Immunogen Catalog Number: AG33259	Calculated MW: 226 aa, 27 kDa	
	Observed MW: 27 kDa	

Applications

Tested Applications:
Indirect ELISA, WB

Species Specificity:
mouse, human

Background Information

TXNDC9, also known as APACD, has a negative effect on protein folding by significantly reducing the activity of chaperone protein TCP1 complex ATPase activity. Including actin or tubulin.

Storage

Storage:
Store at -80°C.

Storage Buffer:
PBS Only

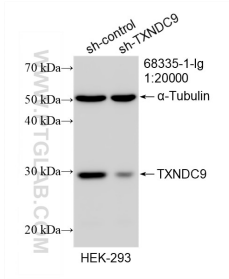
For technical support and original validation data for this product please contact:

T: 1 (888) 4PTGLAB (1-888-478-4522) (toll free in USA), or 1(312) 455-8498 (outside USA)

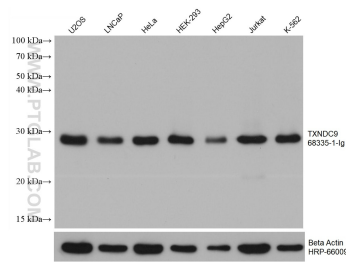
E: proteintech@ptglab.com
W: ptglab.com

This product is exclusively available under Proteintech Group brand and is not available to purchase from any other manufacturer.

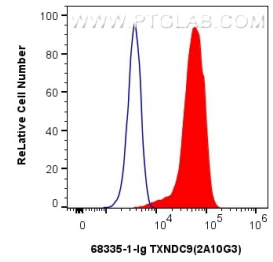
Selected Validation Data



WB result of TXNDC9 antibody (68335-1-Ig; 1:20000; incubated at room temperature for 1.5 hours) with sh-Control and sh-TXNDC9 transfected HEK-293 cells. This data was developed using the same antibody clone with 68335-1-PBS in a different storage buffer formulation.



Various lysates were subjected to SDS PAGE followed by western blot with 68335-1-Ig (TXNDC9 antibody) at dilution of 1:10000 incubated at room temperature for 1.5 hours. The membrane was stripped and reblotted with HRP-conjugated Beta Actin Monoclonal antibody (HRP-66009) as loading control. This data was developed using the same antibody clone with 68335-1-PBS in a different storage buffer formulation.



1×10^6 HEK-293 cells were intracellularly stained with 0.8 μ g TXNDC9 Monoclonal antibody (68335-1-Ig, Clone:2A10G3) and CoraLite[®] 488-Conjugated AffiniPure Goat Anti-Mouse IgG(H+L) (SA00013-1)(red), or 0.8 μ g Mouse IgG1 isotype control Mouse McAb (66360-1-Ig, Clone: 1F8D3) (blue). Cells were fixed with 4% PFA and permeabilized with Flow Cytometry Perm Buffer (PF00011-C). This data was developed using the same antibody clone with 68335-1-PBS in a