

For Research Use Only

SH3BP1 Monoclonal antibody, PBS Only



Catalog Number: 68328-1-PBS

Basic Information

Catalog Number: 68328-1-PBS	GenBank Accession Number: BC008282	Purification Method: Protein A purification
Size: 100ug, Concentration: 1mg/ml by Nanodrop;	GeneID (NCBI): 23616	CloneNo.: 1B12C6
Source: Mouse	UNIPROT ID: Q9Y3L3	
Isotype: IgG1	Full Name: SH3-domain binding protein 1	
Immunogen Catalog Number: AG15165	Calculated MW: 701 aa, 76 kDa	
	Observed MW: 76-80 kDa	

Applications

Tested Applications:
Indirect ELISA, WB

Species Specificity:
rat, mouse, human

Background Information

SH3BP1 is also named as Chimeric SH3BP1-PDXP protein and BARGIN, and belongs to the to the RhoGAP family. SH3BP1 can be as a partner of the exocyst complex and establish a physical and functional link between two motility-driving pathways, the Ral/exocyst and Rac signaling pathways. (PMID:21658605). SH3BP1 localizes together with the exocyst to the leading edge of motile cells and that SH3BP1 regulates cell migration via its GAP activity upon Rac1.

Storage

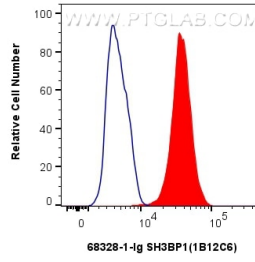
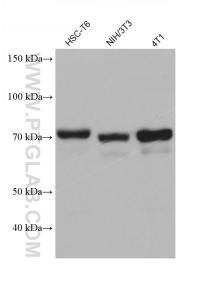
Storage:
Store at -80°C.

Storage Buffer:
PBS Only

For technical support and original validation data for this product please contact:
T: 1 (888) 4PTGLAB (1-888-478-4522) (toll free in USA), or 1(312) 455-8498 (outside USA) E: proteintech@ptglab.com
W: ptglab.com

This product is exclusively available under Proteintech Group brand and is not available to purchase from any other manufacturer.

Selected Validation Data



Various lysates were subjected to SDS PAGE followed by western blot with 68328-1-Ig (SH3BP1 antibody) at dilution of 1:10000 incubated at room temperature for 1.5 hours. This data was developed using the same antibody clone with 68328-1-PBS in a different storage buffer formulation.

1×10^6 HepG2 cells were intracellularly stained with 0.4 ug SH3BP1 Monoclonal antibody (68328-1-Ig, Clone:1B12C6) and CoraLite®488-Conjugated AffiniPure Goat Anti-Mouse IgG(H+L) (SA00013-1)(red), or 0.4 ug Mouse IgG1 isotype control Mouse McAb (66360-1-Ig, Clone: 1F8D3) (blue). Cells were fixed with 4% PFA and permeabilized with Flow Cytometry Perm Buffer (PF00011-C). This data was developed using the same antibody clone with 68328-1-PBS in a

