

For Research Use Only

# LRRC8C Monoclonal antibody, PBS Only



Catalog Number: 68323-1-PBS

## Basic Information

<b>Catalog Number:</b> 68323-1-PBS	<b>GenBank Accession Number:</b> BC113973	<b>Purification Method:</b> Protein A purification
<b>Size:</b> 100ug , Concentration: 1mg/ml by Nanodrop;	<b>GeneID (NCBI):</b> 84230	<b>CloneNo.:</b> 4A6A4
<b>Source:</b> Mouse	<b>UNIPROT ID:</b> Q8TDW0	
<b>Isotype:</b> IgG2b	<b>Full Name:</b> leucine rich repeat containing 8 family, member C	
<b>Immunogen Catalog Number:</b> AG17001	<b>Calculated MW:</b> 803 aa, 92 kDa	
	<b>Observed MW:</b> 105 kDa	

## Applications

**Tested Applications:**  
WB, IF, Indirect ELISA

**Species Specificity:**  
Human

## Background Information

LRRC8C (Leucine-rich repeat-containing protein 8C), also known as AD158, is a non-essential component of the volume-regulated anion channel (VRAC, also known as VSOAC channel), which is required to maintain a constant cell volume in response to extracellular or intracellular permeability changes. The VRAC channel conducts iodide better than chloride and can also conduct organic osmolytes like taurine. The VRAC channel also mediates transport of immunoreactive cyclic dinucleotide GMP-AMP (2'-3'-cGAMP), an immune messenger produced in response to DNA virus in the cytosol (PMID:24790029; 26824658; 28193731).

## Storage

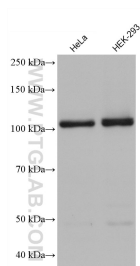
**Storage:**  
Store at -80°C.

**Storage Buffer:**  
PBS Only

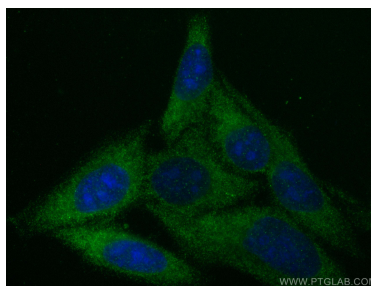
For technical support and original validation data for this product please contact:  
T: 1 (888) 4PTGLAB (1-888-478-4522) (toll free in USA), or 1(312) 455-8498 (outside USA)  
E: [proteintech@ptglab.com](mailto:proteintech@ptglab.com)  
W: [ptglab.com](http://ptglab.com)

This product is exclusively available under Proteintech Group brand and is not available to purchase from any other manufacturer.

## Selected Validation Data



Various lysates were subjected to SDS PAGE followed by western blot with 68323-1-Ig (LRRC8C antibody) at dilution of 1:5000 incubated at room temperature for 1.5 hours. This data was developed using the same antibody clone with 68323-1-PBS in a different storage buffer formulation.



Immunofluorescent analysis of (-20°C Ethanol) fixed HepG2 cells using LRRC8C antibody (68323-1-Ig, Clone: 4A6A4 ) at dilution of 1:400 and CoraLite®488-Conjugated AffiniPure Goat Anti-Mouse IgG(H+L) (SA00013-1). This data was developed using the same antibody clone with 68323-1-PBS in a different storage buffer formulation.