

For Research Use Only

# PBLD Monoclonal antibody, PBS Only



Catalog Number: 68317-1-PBS

## Basic Information

<b>Catalog Number:</b> 68317-1-PBS	<b>GenBank Accession Number:</b> BC009738	<b>Purification Method:</b> Protein G purification
<b>Size:</b> 100ug , Concentration: 1mg/ml by Nanodrop;	<b>GeneID (NCBI):</b> 64081	<b>CloneNo.:</b> 1G11D4
<b>Source:</b> Mouse	<b>UNIPROT ID:</b> P30039	
<b>Isotype:</b> IgG1	<b>Full Name:</b> phenazine biosynthesis-like protein domain containing	
<b>Immunogen Catalog Number:</b> AG23827	<b>Observed MW:</b> 30 kDa	

## Applications

**Tested Applications:**  
WB, IF, Indirect ELISA

**Species Specificity:**  
Human, pig

## Background Information

PBLD, also termed as MAWBP, was first identified from a human liver cDNA library using a yeast two-hybrid technique by Iriyama et al. As the only representative of phenazine biosynthesis-like protein family, PBLD is widely expressed in human tissues, such as brain, heart, lung, liver, pancreas, kidney, and placenta. Its expression is elevated in several diseases processes, including insulin resistance, folate deficiency, and hypotension. PBLD has been proved to be involved in gastric carcinogenesis, PBLD expression was attenuated in gastric cancer (GC) tissues, and negatively regulated the growth and invasion in gastric cancer cell-lines by inhibiting TGF- $\beta$ 1-induced EMT (Epithelial-Mesenchymal Transition).(PMID: 11355021, 17929853, 23687415, 26594798)

## Storage

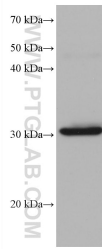
**Storage:**  
Store at -80°C.

**Storage Buffer:**  
PBS Only

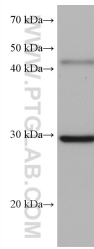
For technical support and original validation data for this product please contact:  
T: 1 (888) 4PTGLAB (1-888-478-4522) (toll free in USA), or 1(312) 455-8498 (outside USA)      E: proteintech@ptglab.com  
W: ptglab.com

This product is exclusively available under Proteintech Group brand and is not available to purchase from any other manufacturer.

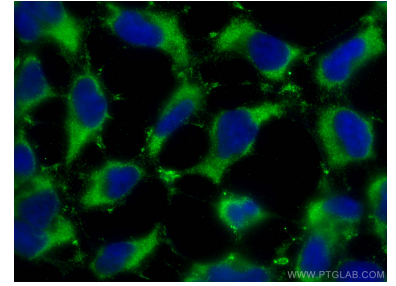
## Selected Validation Data



pig liver tissue were subjected to SDS PAGE followed by western blot with 68317-1-Ig (PBLD antibody) at dilution of 1:5000 incubated at room temperature for 1.5 hours. This data was developed using the same antibody clone with 68317-1-PBS in a different storage buffer formulation.



pig kidney tissue were subjected to SDS PAGE followed by western blot with 68317-1-Ig (PBLD antibody) at dilution of 1:5000 incubated at room temperature for 1.5 hours. This data was developed using the same antibody clone with 68317-1-PBS in a different storage buffer formulation.



Immunofluorescent analysis of (-20°C Ethanol) fixed HEK-293 cells using PBLD antibody (68317-1-Ig, Clone: 1G11D4 ) at dilution of 1:400 and CoraLite®488-Conjugated AffiniPure Goat Anti-Mouse IgG(H+L). This data was developed using the same antibody clone with 68317-1-PBS in a different storage buffer formulation.