

For Research Use Only

# GTSE1 Monoclonal antibody, PBS Only



Catalog Number: 68313-1-PBS

## Basic Information

<b>Catalog Number:</b> 68313-1-PBS	<b>GenBank Accession Number:</b> BC006325	<b>Purification Method:</b> Protein G purification
<b>Size:</b> 100ug , Concentration: 1 mg/ml by Nanodrop;	<b>GeneID (NCBI):</b> 51512	<b>CloneNo.:</b> 3B4A12
<b>Source:</b> Mouse	<b>UNIPROT ID:</b> Q9NYZ3	
<b>Isotype:</b> IgG1	<b>Full Name:</b> G-2 and S-phase expressed 1	
<b>Immunogen Catalog Number:</b> AG32817	<b>Calculated MW:</b> 77 kDa	
	<b>Observed MW:</b> 67 kDa	

## Applications

**Tested Applications:**  
WB, Indirect ELISA

**Species Specificity:**  
Human, Rat, mouse

## Background Information

GTSE1 is only expressed in the S and G2 phases of the cell cycle, where it colocalizes with cytoplasmic tubulin and microtubules. In response to DNA damage, the encoded protein accumulates in the nucleus and binds the tumor suppressor protein p53, shutting it out of the nucleus and repressing its ability to induce apoptosis.

## Storage

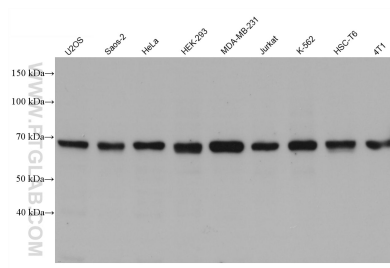
**Storage:**  
Store at -80°C.

**Storage Buffer:**  
PBS Only

For technical support and original validation data for this product please contact:  
T: 1 (888) 4PTGLAB (1-888-478-4522) (toll free in USA), or 1(312) 455-8498 (outside USA)      E: [proteintech@ptglab.com](mailto:proteintech@ptglab.com)  
W: [ptglab.com](http://ptglab.com)

**This product is exclusively available under Proteintech Group brand and is not available to purchase from any other manufacturer.**

## Selected Validation Data



Various lysates were subjected to SDS PAGE followed by western blot with 68313-1-Ig (GTSE1 antibody) at dilution of 1:10000 incubated at room temperature for 1.5 hours. This data was developed using the same antibody clone with 68313-1-PBS in a different storage buffer formulation.