

For Research Use Only

SNX3 Monoclonal antibody, PBS Only



Catalog Number: 68292-1-PBS

Basic Information

Catalog Number: 68292-1-PBS	GenBank Accession Number: BC008444	Purification Method: Protein G purification
Size: 100ug , Concentration: 1 mg/ml by Nanodrop;	GeneID (NCBI): 8724	CloneNo.: 2B5B7
Source: Mouse	UNIPROT ID: O60493	
Isotype: IgG1	Full Name: sorting nexin 3	
Immunogen Catalog Number: AG1160	Calculated MW: 19 kDa	
	Observed MW: 16-20 kDa	

Applications

Tested Applications:
WB, IF, Indirect ELISA

Species Specificity:
Human, Mouse, Rat

Background Information

SNX3 is a member of the sorting nexin family of proteins regulating membrane traffic. SNX3 regulates endosomal function through its PX (phox homology)-domain-mediated interaction with PtdIns(3)P (PMID: 11433298). It is a potential regulator of neurite formation and may play an important role in the development and function of the central nervous system (PMID: 19576982; 20817026).

Storage

Storage:
Store at -80°C.

Storage Buffer:
PBS Only

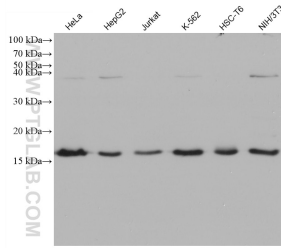
For technical support and original validation data for this product please contact:

T: 1 (888) 4PTGLAB (1-888-478-4522) (toll free in USA), or 1(312) 455-8498 (outside USA)

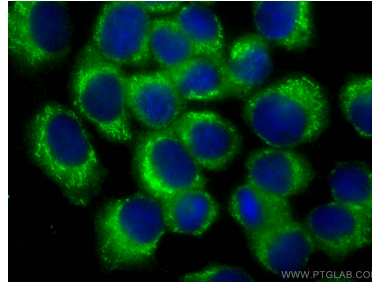
E: proteintech@ptglab.com
W: ptglab.com

This product is exclusively available under Proteintech Group brand and is not available to purchase from any other manufacturer.

Selected Validation Data



Various lysates were subjected to SDS PAGE followed by western blot with 68292-1-Ig (SNX3 antibody) at dilution of 1:20000 incubated at room temperature for 1.5 hours. This data was developed using the same antibody clone with 68292-1-PBS in a different storage buffer formulation.



Immunofluorescent analysis of (-20°C Methanol) fixed A431 cells using SNX3 antibody (68292-1-Ig, Clone: 2B5B7) at dilution of 1:800 and CoraLite®488-Conjugated AffiniPure Goat Anti-Mouse IgG(H+L). This data was developed using the same antibody clone with 68292-1-PBS in a different storage buffer formulation.