

For Research Use Only

# C6orf211/ARMT1 Monoclonal antibody, PBS Only



Catalog Number: 68288-1-PBS

Featured Product

## Basic Information

Catalog Number:

68288-1-PBS

Size:

100ug, Concentration: 1 mg/ml by Nanodrop;

Source:

Mouse

Isotype:

IgG1

Immunogen Catalog Number:

AG19146

GenBank Accession Number:

BC011348

GeneID (NCBI):

79624

UNIPROT ID:

Q9H993

Full Name:

chromosome 6 open reading frame 211

Calculated MW:

441 aa, 51 kDa

Observed MW:

45-51 kDa

Purification Method:

Protein G purification

CloneNo.:

1D6D9

## Applications

Tested Applications:

WB, Indirect ELISA

Species Specificity:

Human

## Background Information

Human C6orf211 encodes Armt1, a protein carboxyl methyltransferase that targets PCNA and is linked to the DNA damage response.

## Storage

Storage:

Store at -80°C.

Storage Buffer:

PBS Only

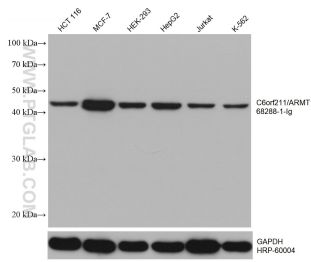
For technical support and original validation data for this product please contact:

T: 1 (888) 4PTGLAB (1-888-478-4522) (toll free in USA), or 1(312) 455-8498 (outside USA)

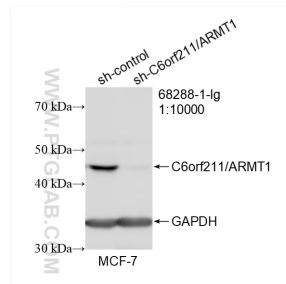
E: [proteintech@ptglab.com](mailto:proteintech@ptglab.com)  
W: [ptglab.com](http://ptglab.com)

This product is exclusively available under Proteintech Group brand and is not available to purchase from any other manufacturer.

## Selected Validation Data



Various lysates were subjected to SDS PAGE followed by western blot with 68288-1-Ig (C6orf211 antibody) at dilution of 1:10000 incubated at room temperature for 1.5 hours. The membrane was stripped and reblotted with HRP-conjugated GAPDH Monoclonal antibody (HRP-60004) as loading control. This data was developed using the same antibody clone with 68288-1-PBS in a different storage buffer formulation.



WB result of C6orf211/ARMT1 antibody (68288-1-Ig; 1:10000; incubated at room temperature for 1.5 hours) with sh-Control and sh-C6orf211/ARMT1 transfected MCF-7 cells. This data was developed using the same antibody clone with 68288-1-PBS in a different storage buffer formulation.