

For Research Use Only

# SERCA3 Monoclonal antibody, PBS Only



Catalog Number: 68287-1-PBS

## Basic Information

<b>Catalog Number:</b> 68287-1-PBS	<b>GenBank Accession Number:</b> BC035729	<b>Purification Method:</b> Protein G purification
<b>Size:</b> 100ug, Concentration: 1mg/ml by Nanodrop;	<b>GeneID (NCBI):</b> 489	<b>CloneNo.:</b> 1A2C2
<b>Source:</b> Mouse	<b>UNIPROT ID:</b> Q93084	
<b>Isotype:</b> IgG1	<b>Full Name:</b> ATPase, Ca <sup>++</sup> transporting, ubiquitous	
<b>Immunogen Catalog Number:</b> AG4527	<b>Calculated MW:</b> 1043 aa, 114 kDa	
	<b>Observed MW:</b> 97-110 kDa	

## Applications

**Tested Applications:**  
WB, IF, Indirect ELISA

**Species Specificity:**  
Human, mouse, rat

## Background Information

The SERCA, which pumps cytosolic Ca<sup>2+</sup> into the ER, is an imperative maintainer of ER Ca<sup>2+</sup> homeostasis. The mammalian SERCA family is comprised of three tissue-specific members, SERCA1-3. SERCA3 is present in endothelial and epithelial cells of various tissues. SERCA3 helps regulate intracellular Ca<sup>2+</sup>, which is critical for maintaining normal INS secretion and is closely linked to metabolism, neuronal plasticity, gene transcription, cell growth, differentiation, apoptosis, protein folding and carcinogenesis. Several isoforms of SERCA3 exist due to the alternative splicing.

## Storage

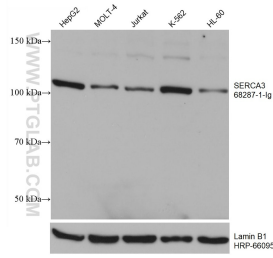
**Storage:**  
Store at -80°C.

**Storage Buffer:**  
PBS Only

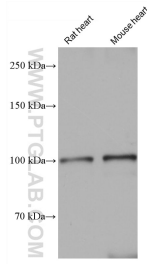
For technical support and original validation data for this product please contact:  
T: 1 (888) 4PTGLAB (1-888-478-4522) (toll free in USA), or 1(312) 455-8498 (outside USA)      E: proteintech@ptglab.com  
W: ptglab.com

**This product is exclusively available under Proteintech Group brand and is not available to purchase from any other manufacturer.**

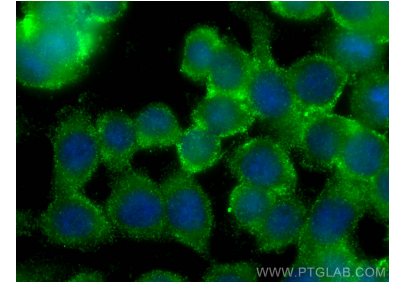
## Selected Validation Data



Various lysates were subjected to SDS PAGE followed by western blot with 68287-1-Ig (ATP2A3 antibody) at dilution of 1:10000 incubated at room temperature for 1.5 hours. The membrane was stripped and reblotted with HRP-conjugated Lamin B1 Monoclonal antibody (HRP-66095) as loading control. This data was developed using the same antibody clone with 68287-1-PBS in a different storage buffer formulation.



Various lysates were subjected to SDS PAGE followed by western blot with 68287-1-Ig (ATP2A3 antibody) at dilution of 1:10000 incubated at room temperature for 1.5 hours. This data was developed using the same antibody clone with 68287-1-PBS in a different storage buffer formulation.



Immunofluorescent analysis of (-20°C Ethanol) fixed HT-29 cells using SERCA3 antibody (68287-1-Ig, Clone: 1A2C2) at dilution of 1:400 and CoraLite®488-Conjugated AffiniPure Goat Anti-Mouse IgG(H+L). This data was developed using the same antibody clone with 68287-1-PBS in a different storage buffer formulation.