

For Research Use Only

# RABEP1 Monoclonal antibody, PBS Only



Catalog Number: 68285-1-PBS

## Basic Information

<b>Catalog Number:</b> 68285-1-PBS	<b>GenBank Accession Number:</b> BC041700	<b>Purification Method:</b> Protein G purification
<b>Size:</b> 100ug, Concentration: 1 mg/ml by Nanodrop;	<b>GeneID (NCBI):</b> 9135	<b>CloneNo.:</b> 1E7E11
<b>Source:</b> Mouse	<b>UNIPROT ID:</b> Q15276	
<b>Isotype:</b> IgG1	<b>Full Name:</b> rabaptin, RAB GTPase binding effector protein 1	
<b>Immunogen Catalog Number:</b> AG6023	<b>Calculated MW:</b> 99 kDa	
	<b>Observed MW:</b> 100-105 kDa	

## Applications

**Tested Applications:**  
WB, IF, Indirect ELISA

**Species Specificity:**  
Human, Mouse, Rat, Rabbit, Pig

## Background Information

Rab GTPase-binding effector protein 1 is an enzyme that in humans is encoded by the RABEP1 gene. It belongs to rabaptin protein family. RABEP1 act as linker between gamma-adaptin, RAB4A and RAB5A. It is involved in endocytic membrane fusion and membrane trafficking of recycling endosomes. (PMID: 22841712)

## Storage

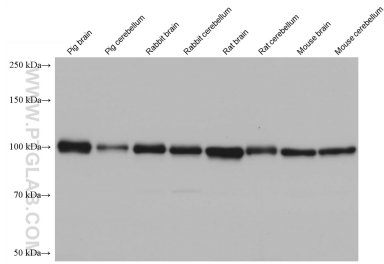
**Storage:**  
Store at -80°C.

**Storage Buffer:**  
PBS Only

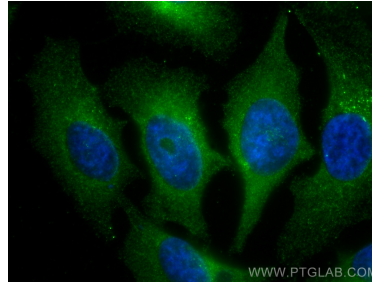
For technical support and original validation data for this product please contact:  
T: 1 (888) 4PTGLAB (1-888-478-4522) (toll free in USA), or 1(312) 455-8498 (outside USA)      E: proteintech@ptglab.com  
W: ptglab.com

This product is exclusively available under Proteintech Group brand and is not available to purchase from any other manufacturer.

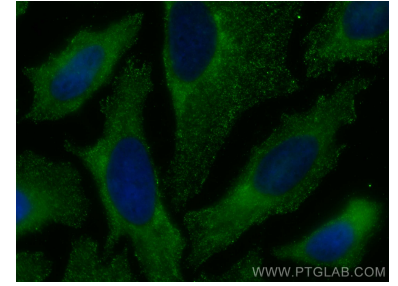
## Selected Validation Data



Various lysates were subjected to SDS PAGE followed by western blot with 68285-1-Ig (RABEP1 antibody) at dilution of 1:20000 incubated at room temperature for 1.5 hours. This data was developed using the same antibody clone with 68285-1-PBS in a different storage buffer formulation.



Immunofluorescent analysis of (-20°C Methanol) fixed HeLa cells using RABEP1 antibody (68285-1-Ig, Clone: 1E7E11) at dilution of 1:400 and CoraLite®488-Conjugated AffiniPure Goat Anti-Mouse IgG(H+L). This data was developed using the same antibody clone with 68285-1-PBS in a different storage buffer formulation.



Immunofluorescent analysis of (-20°C Methanol) fixed HeLa cells using RABEP1 antibody (68285-1-Ig, Clone: 1E7E11) at dilution of 1:800 and CoraLite®488-Conjugated AffiniPure Goat Anti-Mouse IgG(H+L). This data was developed using the same antibody clone with 68285-1-PBS in a different storage buffer formulation.