

For Research Use Only

BDH2 Monoclonal antibody, PBS Only



Catalog Number: 68279-1-PBS

Featured Product

Basic Information

Catalog Number: 68279-1-PBS	GenBank Accession Number: BC095414	Purification Method: Protein A purification
Size: 100ug , Concentration: 1 mg/ml by Nanodrop;	GeneID (NCBI): 56898	CloneNo.: 1B6H5
Source: Mouse	UNIPROT ID: Q9BUT1	
Isotype: IgG1	Full Name: 3-hydroxybutyrate dehydrogenase, type 2	
Immunogen Catalog Number: AG26108	Observed MW: 27 kDa	

Applications

Tested Applications:
WB, IF, ELISA

Species Specificity:
Human

Background Information

Cytosolic type 2-hydroxybutyrate dehydrogenase, BDH2, originally named DHRS6, plays a physiological role in the cytosolic utilization of ketone bodies, which can subsequently enter mitochondria and the tricarboxylic acid cycle (PMID: 16380372). Moreover, BDH2 catalyzes the production of 2, 3-DHBA during enterobactin biosynthesis and participates in 24p3 (LCN2)-mediated iron transport and apoptosis (PMID: 23150981). It has 3 isoforms with molecular weights of 27, 19, and 16 kDa.

Storage

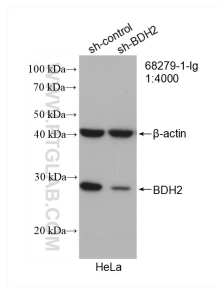
Storage:
Store at -80°C.

Storage Buffer:
PBS only

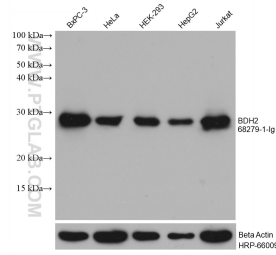
For technical support and original validation data for this product please contact:
T: 1 (888) 4PTGLAB (1-888-478-4522) (toll free in USA), or 1(312) 455-8498 (outside USA) E: proteintech@ptglab.com
W: ptglab.com

This product is exclusively available under Proteintech Group brand and is not available to purchase from any other manufacturer.

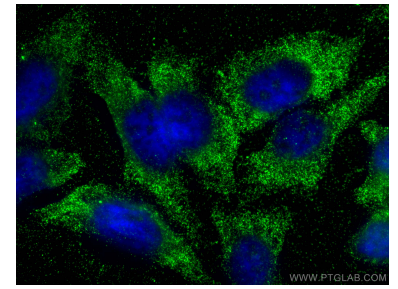
Selected Validation Data



WB result of BDH2 antibody (68279-1-Ig; 1:4000; incubated at room temperature for 1.5 hours) with sh-Control and sh-BDH2 transfected HeLa cells. This data was developed using the same antibody clone with 68279-1-PBS in a different storage buffer formulation.



Various lysates were subjected to SDS PAGE followed by western blot with 68279-1-Ig (BDH2 antibody) at dilution of 1:10000 and incubated at room temperature for 1.5 hours. The membrane was stripped and reblotted with HRP-conjugated Beta Actin Monoclonal antibody (HRP-66009) as loading control. This data was developed using the same antibody clone with 68279-1-PBS in a different storage buffer formulation.



Immunofluorescent analysis of (-20°C Ethanol) fixed HepG2 cells using BDH2 antibody (68279-1-Ig, Clone: 1B6H5) at dilution of 1:400 and CoraLite@488-Conjugated AffiniPure Goat Anti-Mouse IgG(H+L). This data was developed using the same antibody clone with 68279-1-PBS in a different storage buffer formulation.