

For Research Use Only

FC of Human IgG Monoclonal antibody, PBS Only



Catalog Number: 68275-1-PBS

Basic Information

Catalog Number:

68275-1-PBS

Size:

100ug, Concentration: 1 mg/ml by Nanodrop;

Source:

Mouse

Isotype:

IgG1

GenBank Accession Number:

GeneID (NCBI):

Full Name:

Observed MW:

55 kDa

Purification Method:

Protein G purification

CloneNo.:

1A12C11

Applications

Tested Applications:

WB, Indirect ELISA

Species Specificity:

Human

Background Information

Immunoglobulin G (IgG) is one of the most abundant proteins in human serum, accounting for about 10-20% of plasma protein. IgG FC is a homodimer that is composed of the constant region of the two heavy chains that form the IgG molecule. This antibody detects the human IgG FC heavy chain.

Storage

Storage:

Store at -80°C.

Storage Buffer:

PBS Only

For technical support and original validation data for this product please contact:

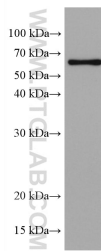
T: 1 (888) 4PTGLAB (1-888-478-4522) (toll free in USA), or 1(312) 455-8498 (outside USA)

E: proteintech@ptglab.com

W: ptglab.com

This product is exclusively available under Proteintech Group brand and is not available to purchase from any other manufacturer.

Selected Validation Data



human plasma were subjected to SDS PAGE followed by western blot with 68275-1-Ig (FC of Human IgG antibody) at dilution of 1:40000 incubated at room temperature for 1.5 hours. This data was developed using the same antibody clone with 68275-1-PBS in a different storage buffer formulation.