

For Research Use Only

# CRMP5 Monoclonal antibody, PBS Only



Catalog Number: 68272-1-PBS

## Basic Information

<b>Catalog Number:</b> 68272-1-PBS	<b>GenBank Accession Number:</b> BC002874	<b>Purification Method:</b> Protein A purification
<b>Size:</b> 100ug , Concentration: 1 mg/ml by Nanodrop;	<b>GeneID (NCBI):</b> 56896	<b>CloneNo.:</b> 3F2D8
<b>Source:</b> Mouse	<b>UNIPROT ID:</b> Q9BPU6	
<b>Isotype:</b> IgG2a	<b>Full Name:</b> dihydropyrimidinase-like 5	
<b>Immunogen Catalog Number:</b> AG0783	<b>Calculated MW:</b> 61 kDa	
	<b>Observed MW:</b> 61 kDa	

## Applications

**Tested Applications:**  
WB, Indirect ELISA

**Species Specificity:**  
Human, Mouse, Rat, Pig, Rabbit

## Background Information

Collapsin response mediator proteins (CRMPs) are a family consisting of five homologous cytosolic phosphoproteins (CRMP1-5). All five CRMPs are abundantly expressed in the developing brain and the adult nervous system. CRMP5 is phylogenetically divergent from the other four CRMPs, sharing only 50% homology; this protein plays an important role in modulating filopodial dynamics and, in turn, restricting neuronal growth cone development.

## Storage

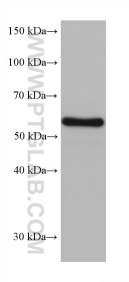
**Storage:**  
Store at -80°C.

**Storage Buffer:**  
PBS Only

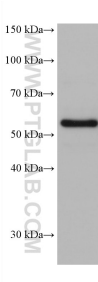
For technical support and original validation data for this product please contact:  
T: 1 (888) 4PTGLAB (1-888-478-4522) (toll free in USA), or 1(312) 455-8498 (outside USA)  
E: [proteintech@ptglab.com](mailto:proteintech@ptglab.com)  
W: [ptglab.com](http://ptglab.com)

This product is exclusively available under Proteintech Group brand and is not available to purchase from any other manufacturer.

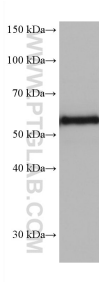
## Selected Validation Data



pig brain tissue were subjected to SDS PAGE followed by western blot with 68272-1-Ig (DPYSL5 antibody) at dilution of 1:20000 incubated at room temperature for 1.5 hours. This data was developed using the same antibody clone with 68272-1-PBS in a different storage buffer formulation.



rabbit cerebellum tissue were subjected to SDS PAGE followed by western blot with 68272-1-Ig (DPYSL5 antibody) at dilution of 1:20000 incubated at room temperature for 1.5 hours. This data was developed using the same antibody clone with 68272-1-PBS in a different storage buffer formulation.



rat cerebellum tissue were subjected to SDS PAGE followed by western blot with 68272-1-Ig (CRMP5 antibody) at dilution of 1:20000 incubated at room temperature for 1.5 hours. This data was developed using the same antibody clone with 68272-1-PBS in a different storage buffer formulation.