

For Research Use Only

# RPS20 Monoclonal antibody, PBS Only (Detector)

Catalog Number: 68270-1-PBS



## Basic Information

<b>Catalog Number:</b> 68270-1-PBS	<b>GenBank Accession Number:</b> BC007507	<b>Purification Method:</b> Protein G purification
<b>Size:</b> 100ug , Concentration: 1mg/ml by Nanodrop;	<b>GeneID (NCBI):</b> 6224	<b>CloneNo.:</b> 3E9B4
<b>Source:</b> Mouse	<b>UNIPROT ID:</b> P60866	
<b>Isotype:</b> IgG1	<b>Full Name:</b> ribosomal protein S20	
<b>Immunogen Catalog Number:</b> AG8275	<b>Calculated MW:</b> 13 kDa	
	<b>Observed MW:</b> 16 kDa	

## Applications

**Tested Applications:**  
WB, IHC, IF/ICC, Cytometric bead array, Indirect ELISA

**Species Specificity:**  
human, mouse, rat

## Product Information

68270-1-PBS targets RPS20 as part of a matched antibody pair:

MP50774-1: 68270-2-PBS capture and 68270-1-PBS detection (validated in Cytometric bead array)

MP50774-2: 68270-3-PBS capture and 68270-1-PBS detection (validated in Cytometric bead array)

Unconjugated mouse monoclonal antibody pair in PBS only (BSA and azide free) storage buffer at a concentration of 1 mg/mL, ready for conjugation.

This conjugation ready format makes antibodies ideal for use in many applications including: ELISAs, multiplex assays requiring matched pairs, mass cytometry, and multiplex imaging applications. Antibody use should be optimized by the end user for each application and assay.

## Background Information

Ribosomes, the organelles that catalyze protein synthesis, consist of a small 40S subunit and a large 60S subunit. Together these subunits are composed of 4 RNA species and approximately 80 structurally distinct proteins. RPS20 is a component of the 40S subunit. The protein belongs to the S10P family of ribosomal proteins. It is located in the cytoplasm.

## Storage

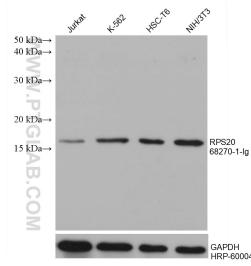
**Storage:**  
Store at -80°C.

**Storage Buffer:**  
PBS Only

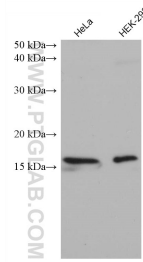
For technical support and original validation data for this product please contact:  
T: 1 (888) 4PTGLAB (1-888-478-4522) (toll free in USA), or 1(312) 455-8498 (outside USA)      E: proteintech@ptglab.com  
W: ptglab.com

**This product is exclusively available under Proteintech Group brand and is not available to purchase from any other manufacturer.**

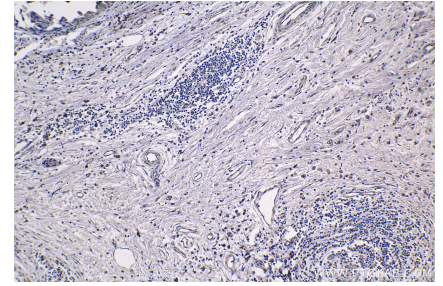
## Selected Validation Data



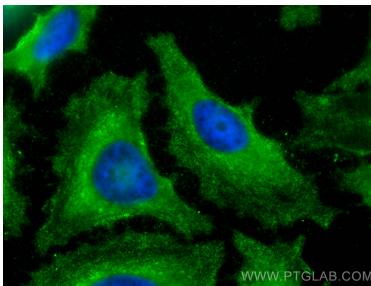
Various lysates were subjected to SDS PAGE followed by western blot with 68270-1-Ig (RPS20 antibody) at dilution of 1:10000 incubated at room temperature for 1.5 hours. The membrane was stripped and reblotted with HRP-conjugated GAPDH Monoclonal antibody (HRP-60004) as loading control. This data was developed using the same antibody clone with 68270-1-PBS in a different storage buffer formulation.



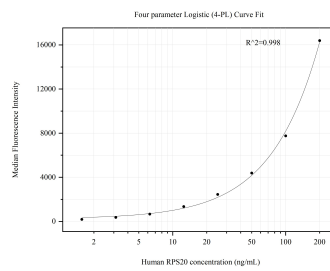
Various lysates were subjected to SDS PAGE followed by western blot with 68270-1-Ig (RPS20 antibody) at dilution of 1:10000 incubated at room temperature for 1.5 hours. This data was developed using the same antibody clone with 68270-1-PBS in a different storage buffer formulation.



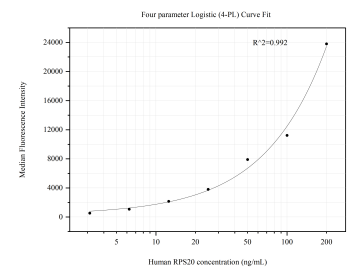
Immunohistochemical analysis of paraffin-embedded human breast cancer tissue slide using 68270-1-Ig (RPS20 antibody) at dilution of 1:1000 (under 10x lens). This data was developed using the same antibody clone with 68270-1-PBS in a different storage buffer formulation.



Immunofluorescent analysis of (-20°C Methanol) fixed HeLa cells using RPS20 antibody (68270-1-Ig, Clone: 3E9B4) at dilution of 1:1500 and CoraLite®488-Conjugated AffiniPure Goat Anti-Mouse IgG(H+L). This data was developed using the same antibody clone with 68270-1-PBS in a different storage buffer formulation.



Cytometric bead array standard curve of MP50774-1, RPS20 Monoclonal Matched Antibody Pair, PBS Only. Capture antibody: 68270-2-PBS. Detection antibody: 68270-1-PBS. Standard: Ag8275. Range: 1.563-200 ng/mL.



Cytometric bead array standard curve of MP50774-2, RPS20 Monoclonal Matched Antibody Pair, PBS Only. Capture antibody: 68270-3-PBS. Detection antibody: 68270-1-PBS. Standard: Ag8275. Range: 3.125-200 ng/mL.