

For Research Use Only

# CARD11 Monoclonal antibody, PBS Only



Catalog Number: 68269-1-PBS

## Basic Information

<b>Catalog Number:</b> 68269-1-PBS	<b>GenBank Accession Number:</b> BC111719	<b>Purification Method:</b> Protein G purification
<b>Size:</b> 100ug , Concentration: 1 mg/ml by Nanodrop;	<b>GeneID (NCBI):</b> 84433	<b>CloneNo.:</b> 3F5H6
<b>Source:</b> Mouse	<b>UNIPROT ID:</b> Q9BXL7	
<b>Isotype:</b> IgG1	<b>Full Name:</b> caspase recruitment domain family, member 11	
<b>Immunogen Catalog Number:</b> AG16468	<b>Calculated MW:</b> 1154 aa, 133 kDa	
	<b>Observed MW:</b> 140 kDa	

## Applications

**Tested Applications:**  
WB, IF, Indirect ELISA

**Species Specificity:**  
Human

## Background Information

CARD11 also named as BIMP3 or CARMA1, is a 1154 amino acid protein, which contains one PDZ domain, one guanylate kinase-like domain, and one CARD domain. CARD11 localizes in the cytoplasm and co-localized with DPP4 in membrane raft. CARD11 is detected in adult peripheral blood leukocytes, thymus, spleen and liver. CARD11 also is found in CARD11 promyelocytic leukemia HL-60 cells, chronic myelogenous leukemia K-562 cells, Burkitt's lymphoma Raji cells and colorectal adenocarcinoma SW480 cells. CARD11 is involved in the co-stimulatory signal essential for T-cell receptor mediated T-cell activation.

## Storage

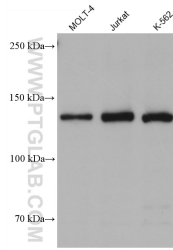
**Storage:**  
Store at -80°C.

**Storage Buffer:**  
PBS Only

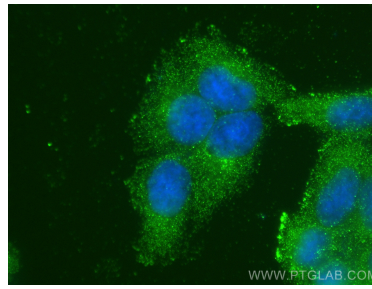
For technical support and original validation data for this product please contact:  
T: 1 (888) 4PTGLAB (1-888-478-4522) (toll free in USA), or 1(312) 455-8498 (outside USA)      E: proteintech@ptglab.com  
W: ptglab.com

This product is exclusively available under Proteintech Group brand and is not available to purchase from any other manufacturer.

## Selected Validation Data



Various lysates were subjected to SDS PAGE followed by western blot with 68269-1-Ig (CARD11 antibody) at dilution of 1:5000 incubated at room temperature for 1.5 hours. This data was developed using the same antibody clone with 68269-1-PBS in a different storage buffer formulation.



Immunofluorescent analysis of (-20°C Ethanol) fixed L02 cells using CARD11 antibody (68269-1-Ig, Clone: 3F5H6 ) at dilution of 1:800 and CoraLite®488-Conjugated AffiniPure Goat Anti-Mouse IgG(H+L). This data was developed using the same antibody clone with 68269-1-PBS in a different storage buffer formulation.