

For Research Use Only

# PDCD2L Monoclonal antibody, PBS Only



Catalog Number: 68249-1-PBS

## Basic Information

<b>Catalog Number:</b> 68249-1-PBS	<b>GenBank Accession Number:</b> BC006146	<b>Purification Method:</b> Protein G purification
<b>Size:</b> 100ug, Concentration: 1mg/ml by Nanodrop;	<b>GeneID (NCBI):</b> 84306	<b>CloneNo.:</b> 2G12C4
<b>Source:</b> Mouse	<b>UNIPROT ID:</b> Q9BRP1	
<b>Isotype:</b> IgG1	<b>Full Name:</b> programmed cell death 2-like	
<b>Immunogen Catalog Number:</b> AG30807	<b>Calculated MW:</b> 358 aa, 39 kDa	
	<b>Observed MW:</b> 39 kDa	

## Applications

**Tested Applications:**  
WB, IF, Indirect ELISA

**Species Specificity:**  
Human

## Background Information

PDCD2L was aberrantly expressed in multiple types of human cancers, and associated with clinical stage and molecular subtype and PDCD2L could be served as a biomarker of CRC (PMID: 35216602).

## Storage

**Storage:**  
Store at -80°C.

**Storage Buffer:**  
PBS Only

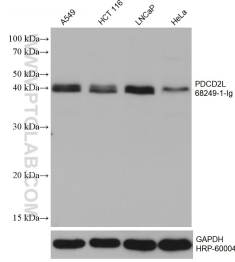
For technical support and original validation data for this product please contact:

T: 1 (888) 4PTGLAB (1-888-478-4522) (toll free in USA), or 1(312) 455-8498 (outside USA)

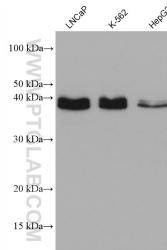
E: [proteintech@ptglab.com](mailto:proteintech@ptglab.com)  
W: [ptglab.com](http://ptglab.com)

This product is exclusively available under Proteintech Group brand and is not available to purchase from any other manufacturer.

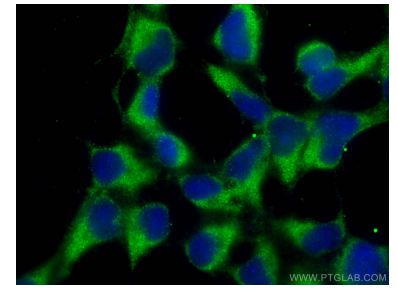
## Selected Validation Data



A549 cells were subjected to SDS PAGE followed by western blot with 68249-1-ig (PDCD2L antibody) at dilution of 1:10000 incubated at room temperature for 1.5 hours. The membrane was stripped and reblotted with HRP-conjugated GAPDH Monoclonal antibody (HRP-60004) as loading control. This data was developed using the same antibody clone with 68249-1-PBS in a different storage buffer formulation.



Various lysates were subjected to SDS PAGE followed by western blot with 68249-1-ig (PDCD2L antibody) at dilution of 1:5000 incubated at room temperature for 1.5 hours. This data was developed using the same antibody clone with 68249-1-PBS in a different storage buffer formulation.



Immunofluorescent analysis of (-20°C Ethanol) fixed HEK-293 cells using PDCD2L antibody (68249-1-ig, Clone: 2G12C4) at dilution of 1:400 and CoraLite®488-Conjugated AffiniPure Goat Anti-Mouse IgG(H+L). This data was developed using the same antibody clone with 68249-1-PBS in a different storage buffer formulation.