

For Research Use Only

GLO1 Monoclonal antibody, PBS Only



Catalog Number: 68242-1-PBS

Basic Information

Catalog Number:

68242-1-PBS

Size:

100ug , Concentration: 1mg/ml by Nanodrop;

Source:

Mouse

Isotype:

IgG2a

Immunogen Catalog Number:

AG7314

GenBank Accession Number:

BC001741

GeneID (NCBI):

2739

UNIPROT ID:

Q04760

Full Name:

glyoxalase I

Calculated MW:

21 kDa

Observed MW:

21-25 kDa

Purification Method:

Protein A purification

CloneNo.:

1B7A8

Applications

Tested Applications:

WB, IF, Indirect ELISA

Species Specificity:

Human, Rat, Mouse

Background Information

Glo1 (glyoxalase I) is a cytosolic protein expressed in all mammalian cells. Its physiological function is the detoxification of MG (methylglyoxal), which is a potent precursor of AGEs (advanced glycation end-products). Glo1 is known to play a role in many diseases including diabetes mellitus, Alzheimer's disease, and cancer.

Storage

Storage:

Store at -80°C.

Storage Buffer:

PBS Only

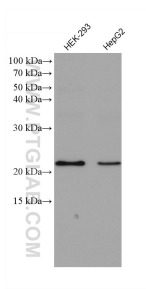
For technical support and original validation data for this product please contact:

T: 1 (888) 4PTGLAB (1-888-478-4522) (toll free in USA), or 1(312) 455-8498 (outside USA)

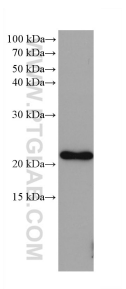
E: proteintech@ptglab.com
W: ptglab.com

This product is exclusively available under Proteintech Group brand and is not available to purchase from any other manufacturer.

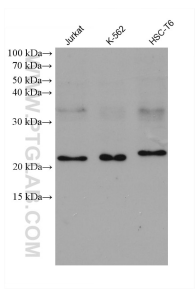
Selected Validation Data



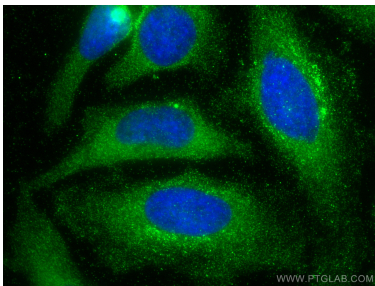
Various lysates were subjected to SDS PAGE followed by western blot with 68242-1-Ig (GLO1 antibody) at dilution of 1:3000 incubated at room temperature for 1.5 hours. This data was developed using the same antibody clone with 68242-1-PBS in a different storage buffer formulation.



LNCaP cells were subjected to SDS PAGE followed by western blot with 68242-1-Ig (GLO1 antibody) at dilution of 1:3000 incubated at room temperature for 1.5 hours. This data was developed using the same antibody clone with 68242-1-PBS in a different storage buffer formulation.



Various lysates were subjected to SDS PAGE followed by western blot with 68242-1-Ig (GLO1 antibody) at dilution of 1:3000 incubated at room temperature for 1.5 hours. This data was developed using the same antibody clone with 68242-1-PBS in a different storage buffer formulation.



Immunofluorescent analysis of (-20°C Methanol) fixed HeLa cells using GLO1 antibody (68242-1-Ig, Clone: 1B7A8) at dilution of 1:400 and CoraLite®488-Conjugated AffiniPure Goat Anti-Mouse IgG(H+L). This data was developed using the same antibody clone with 68242-1-PBS in a different storage buffer formulation.