

For Research Use Only

GPSM1 Monoclonal antibody, PBS Only



Catalog Number: 68233-1-PBS

Basic Information

Catalog Number: 68233-1-PBS	GenBank Accession Number: BC017353	Purification Method: Protein G purification
Size: 100ug, Concentration: 1 mg/ml by Nanodrop;	GeneID (NCBI): 26086	CloneNo.: 3A7A2
Source: Mouse	UNIPROT ID: Q86YR5	
Isotype: IgG1	Full Name: G-protein signaling modulator 1 (AGS3-like, C. elegans)	
Immunogen Catalog Number: AG18773	Calculated MW: 652 aa, 72 kDa	
	Observed MW: 75 kDa	

Applications

Tested Applications:
WB, IF, Indirect ELISA

Species Specificity:
Human, mouse, rat

Background Information

GPSM1, also named as AGS3, is a receptor-independent G protein activator that has been implicated in multiple biological events such as brain development, neuroplasticity and addiction, cardiac function, Golgi structure/function, macroautophagy and metabolism. It contains seven tetratricopeptide repeats in its N-terminal half and four G-protein regulatory (GPR) motifs in its C-terminal half. It has been shown that AGS3 could regulate the orientation of the mitotic spindle, cAMP production, membrane protein transport, and asymmetric cell division by binding preferentially to inactive Gai/o subunits complexed with guanine dinucleotide phosphate (GDP) at multiple G-protein regulatory or GoLoco motif repeats. It also plays an important anti-apoptotic role through enhancing the phosphorylation of cyclic AMP response element-binding protein (p-CREB).

Storage

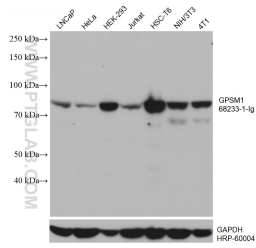
Storage:
Store at -80°C.

Storage Buffer:
PBS Only

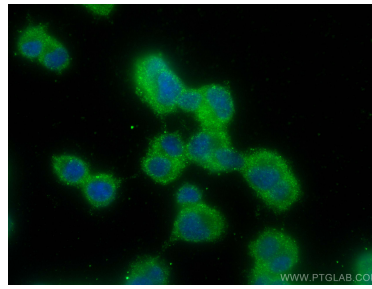
For technical support and original validation data for this product please contact:
T: 1 (888) 4PTGLAB (1-888-478-4522) (toll free in USA), or 1(312) 455-8498 (outside USA) E: proteintech@ptglab.com
W: ptglab.com

This product is exclusively available under Proteintech Group brand and is not available to purchase from any other manufacturer.

Selected Validation Data



Various lysates were subjected to SDS PAGE followed by western blot with 68233-1-Ig (GP5M1 antibody) at dilution of 1:5000 incubated at room temperature for 1.5 hours. The membrane was stripped and reblotted with HRP-conjugated GAPDH Monoclonal antibody (HRP-60004) as loading control. This data was developed using the same antibody clone with 68233-1-PBS in a different storage buffer formulation.



Immunofluorescent analysis of (-20°C Ethanol) fixed PC-12 cells using GP5M1 antibody (68233-1-Ig, Clone: 3A7A2) at dilution of 1:400 and CoraLite® 488-Conjugated AffiniPure Goat Anti-Mouse IgG(H+L). This data was developed using the same antibody clone with 68233-1-PBS in a different storage buffer formulation.