

For Research Use Only

PGK2 Monoclonal antibody, PBS Only



Catalog Number: 68228-1-PBS

Basic Information

Catalog Number:

68228-1-PBS

Size:

100ug , Concentration: 1mg/ml by Nanodrop;

Source:

Mouse

Isotype:

IgG1

Immunogen Catalog Number:

AG20631

GenBank Accession Number:

BC038843

GeneID (NCBI):

5232

UNIPROT ID:

P07205

Full Name:

phosphoglycerate kinase 2

Calculated MW:

417 aa, 45 kDa

Observed MW:

45 kDa

Purification Method:

Protein G purification

CloneNo.:

3D4F2

Applications

Tested Applications:

WB, IF-P, Indirect ELISA

Species Specificity:

Human, Rat, Pig, Mouse

Background Information

PGK2, phosphoglycerate kinase 2, which belongs to the phosphoglycerate kinase superfamily. It catalyzes the first ATP-generating step in the central metabolic pathway of glycolysis, converting 1,3-bisphosphoglycerate and ADP to 3-phosphoglycerate and ATP.

Storage

Storage:

Store at -80°C.

Storage Buffer:

PBS Only

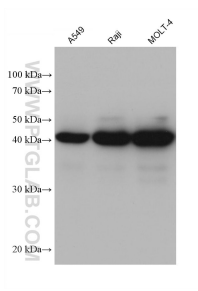
For technical support and original validation data for this product please contact:

T: 1 (888) 4PTGLAB (1-888-478-4522) (toll free in USA), or 1(312) 455-8498 (outside USA)

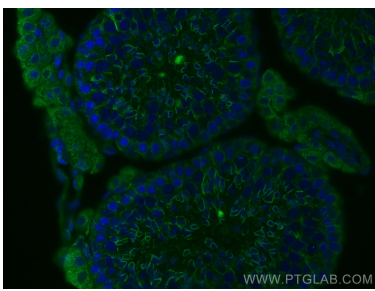
E: proteintech@ptglab.com
W: ptglab.com

This product is exclusively available under Proteintech Group brand and is not available to purchase from any other manufacturer.

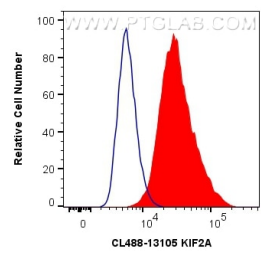
Selected Validation Data



Various lysates were subjected to SDS PAGE followed by western blot with 68228-1-Ig (PGK2 antibody) at dilution of 1:5000 incubated at room temperature for 1.5 hours. This data was developed using the same antibody clone with 68228-1-PBS in a different storage buffer formulation.



Immunofluorescent analysis of (4% PFA) fixed mouse testis tissue using PGK2 antibody (68228-1-Ig, Clone: 3D4F2) at dilution of 1:500 and CoraLite®488-Conjugated AffiniPure Goat Anti-Mouse IgG(H+L). This data was developed using the same antibody clone with 68228-1-PBS in a different storage buffer formulation.



1X10⁶ A549 cells were intracellularly stained with 0.4 ug Anti-Human PGK2 (68228-1-Ig, Clone:3D4F2) and CoraLite®488-Conjugated AffiniPure Goat Anti-Mouse IgG(H+L) at dilution 1:1000 (red), or 0.4 ug Mouse IgG1 Isotype Control (MOPC-21) (65124-1-Ig, Clone: MOPC-21) (blue). Cells were fixed with 4% PFA and permeabilized with Flow Cytometry Perm Buffer (PF00011-C). This data was developed using the same antibody clone with 68228-1-PBS in a

