

For Research Use Only

CD59 Monoclonal antibody, PBS Only



Catalog Number: 68222-1-PBS

Basic Information

Catalog Number: 68222-1-PBS	GenBank Accession Number: BC001506	Purification Method: Protein A purification
Size: 100ug , Concentration: 1mg/ml by Nanodrop;	GeneID (NCBI): 966	CloneNo.: 1E3A1
Source: Mouse	UNIPROT ID: P13987	
Isotype: IgG2b	Full Name: CD59 molecule, complement regulatory protein	
Immunogen Catalog Number: AG32834	Calculated MW: 19 kDa	
	Observed MW: 18-25 kDa	

Applications

Tested Applications:
WB, IHC, IF/ICC, IF-P, ELISA

Species Specificity:
human

Background Information

CD59, also named as MIC11, MIN1, MIN2, MIN3, MSK21, M1RL, MAC1F, HRF20 and 1F5 antigen, is a cell surface molecule glycoprotein with MW 18-25 kDa. It acts as a determinant of proximal-distal cell identity. CD59 acts by binding to the C8 and/or C9 complements of the assembling membrane attack complex (MAC), thereby preventing incorporation of the multiple copies of C9 required for complete formation of the osmolytic pore. It is involved in signal transduction for T-cell activation complexed to a protein tyrosine kinase.

Storage

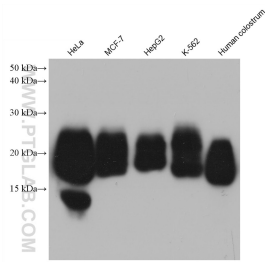
Storage:
Store at -80°C.

Storage Buffer:
PBS Only

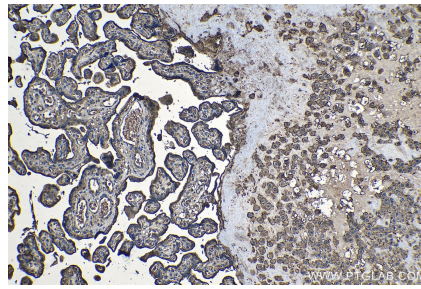
For technical support and original validation data for this product please contact:
T: 1 (888) 4PTGLAB (1-888-478-4522) (toll free in USA), or 1(312) 455-8498 (outside USA) E: proteintech@ptglab.com
W: ptglab.com

This product is exclusively available under Proteintech Group brand and is not available to purchase from any other manufacturer.

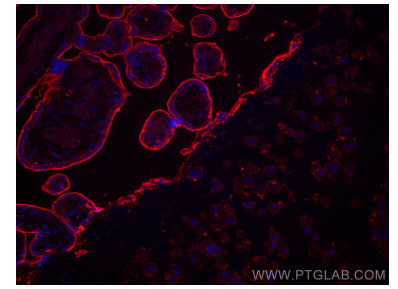
Selected Validation Data



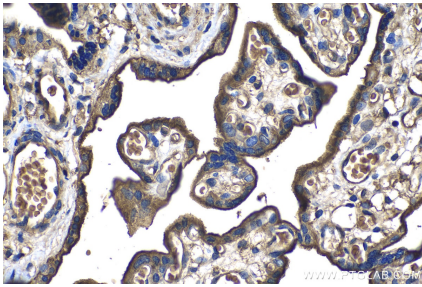
Various lysates were subjected to SDS PAGE followed by western blot with 68222-1-Ig (CD59 antibody) at dilution of 1:20000 incubated at room temperature for 1.5 hours. This data was developed using the same antibody clone with 68222-1-PBS in a different storage buffer formulation.



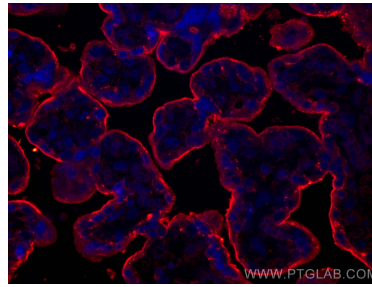
Immunohistochemical analysis of paraffin-embedded human placenta tissue slide using 68222-1-Ig (CD59 antibody) at dilution of 1:1000 (under 10x lens). Heat mediated antigen retrieval with Tris-EDTA buffer (pH 9.0). This data was developed using the same antibody clone with 68222-1-PBS in a different storage buffer formulation.



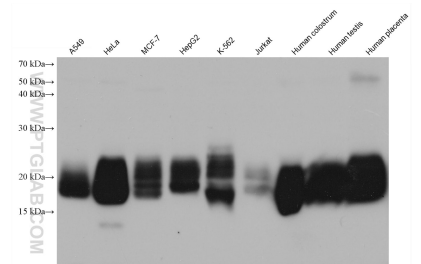
Immunofluorescent analysis of (4% PFA) fixed human placenta tissue using CD59 antibody (68222-1-Ig, Clone: 1E3A1) at dilution of 1:400 and CoraLite®594-Conjugated AffiniPure Goat Anti-Mouse IgG(H+L). This data was developed using the same antibody clone with 68222-1-PBS in a different storage buffer formulation.



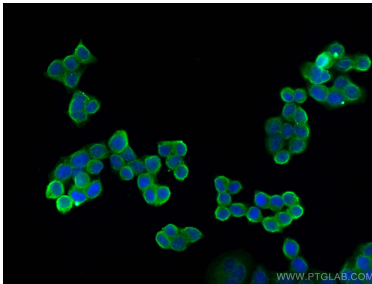
Immunohistochemical analysis of paraffin-embedded human placenta tissue slide using 68222-1-Ig (CD59 antibody) at dilution of 1:1000 (under 40x lens). Heat mediated antigen retrieval with Tris-EDTA buffer (pH 9.0). This data was developed using the same antibody clone with 68222-1-PBS in a different storage buffer formulation.



Immunofluorescent analysis of (4% PFA) fixed human placenta tissue using CD59 antibody (68222-1-Ig, Clone: 1E3A1) at dilution of 1:400 and CoraLite®594-Conjugated AffiniPure Goat Anti-Mouse IgG(H+L). This data was developed using the same antibody clone with 68222-1-PBS in a different storage buffer formulation.



Various lysates were subjected to SDS PAGE followed by western blot with 68222-1-Ig (CD59 antibody) at dilution of 1:10000 incubated at room temperature for 1.5 hours. This data was developed using the same antibody clone with 68222-1-PBS in a different storage buffer formulation.



Immunofluorescent analysis of (4% PFA) fixed BxPC-3 cells using CD59 antibody (68222-1-Ig, Clone: 1E3A1) at dilution of 1:800 and CoraLite®488-Conjugated AffiniPure Goat Anti-Mouse IgG(H+L). This data was developed using the same antibody clone with 68222-1-PBS in a different storage buffer formulation.