

For Research Use Only

# ATP6V1B1 Monoclonal antibody, PBS Only



Catalog Number: 68219-1-PBS

## Basic Information

<b>Catalog Number:</b> 68219-1-PBS	<b>GenBank Accession Number:</b> BC063411	<b>Purification Method:</b> Protein G purification
<b>Size:</b> 100ug , Concentration: 1 mg/ml by Nanodrop;	<b>GeneID (NCBI):</b> 525	<b>CloneNo.:</b> 1G10A8
<b>Source:</b> Mouse	<b>UNIPROT ID:</b> P15313	
<b>Isotype:</b> IgG1	<b>Full Name:</b> ATPase, H <sup>+</sup> transporting, lysosomal 56/58kDa, V1 subunit B1	
<b>Immunogen Catalog Number:</b> AG7405	<b>Calculated MW:</b> 57 kDa	
	<b>Observed MW:</b> 56 kDa	

## Applications

**Tested Applications:**  
WB, IF, Indirect ELISA

**Species Specificity:**  
Human, Mouse, Rat, Rabbit, Pig

## Background Information

ATP6V1B1, also named ATP6B1, VATB and VPP3, belongs to the ATPase alpha/beta chains family. ATP6V1B1 is mainly expressed in kidney. ATP6V1B1 is essential for the proper assembly and activity of V-ATPase. In renal intercalated cells, ATP6V1B1 mediates secretion of protons (H<sup>+</sup>) into the urine thereby ensuring correct urinary acidification. The calculated molecular weight of ATP6V1B1 is 57 kDa.

## Storage

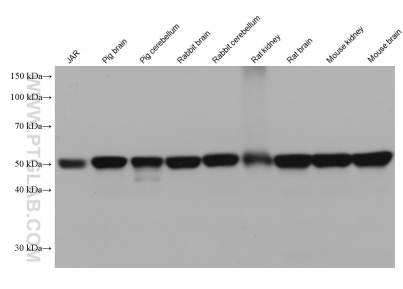
**Storage:**  
Store at -80°C.

**Storage Buffer:**  
PBS Only

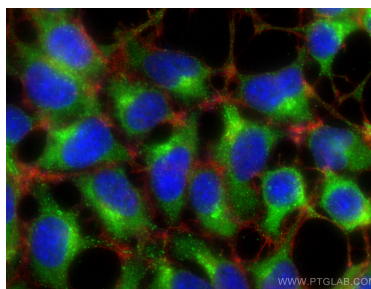
For technical support and original validation data for this product please contact:  
T: 1 (888) 4PTGLAB (1-888-478-4522) (toll free in USA), or 1(312) 455-8498 (outside USA)  
E: [proteintech@ptglab.com](mailto:proteintech@ptglab.com)  
W: [ptglab.com](http://ptglab.com)

This product is exclusively available under Proteintech Group brand and is not available to purchase from any other manufacturer.

## Selected Validation Data



Various lysates were subjected to SDS PAGE followed by western blot with 68219-1-Ig (ATP6V1B1 antibody) at dilution of 1:20000 incubated at room temperature for 1.5 hours. This data was developed using the same antibody clone with 68219-1-PBS in a different storage buffer formulation.



Immunofluorescent analysis of (-20°C Ethanol) fixed HEK-293 cells using ATP6V1B1 antibody (68219-1-Ig, Clone: 1G10A8) at dilution of 1:800 and CoraLite®488-Conjugated AffiniPure Goat Anti-Mouse IgG(H+L), CL594-Phalloidin (red). This data was developed using the same antibody clone with 68219-1-PBS in a different storage buffer formulation.