

For Research Use Only

# CD163 Monoclonal antibody, PBS Only (Capture)



Catalog Number: 68218-4-PBS

## Basic Information

<b>Catalog Number:</b> 68218-4-PBS	<b>GenBank Accession Number:</b> BC051281	<b>Purification Method:</b> Protein G Magarose purification
<b>Size:</b> 100ug , Concentration: 1 mg/ml by Nanodrop;	<b>GeneID (NCBI):</b> 9332	<b>CloneNo.:</b> 2A12E7
<b>Source:</b> Mouse	<b>ENSEMBL Gene ID:</b> ENSG00000177575	
<b>Isotype:</b> IgG1	<b>UNIPROT ID:</b> Q86VB7	
<b>Immunogen Catalog Number:</b> AG26721	<b>Full Name:</b> CD163 molecule	
	<b>Calculated MW:</b> 1156 aa, 125 kDa	

## Applications

**Tested Applications:**  
Cytometric bead array, Indirect ELISA

**Species Specificity:**  
human

## Product Information

68218-4-PBS targets CD163 as part of a matched antibody pair:

MP50318-2: 68218-4-PBS capture and 68218-3-PBS detection (validated in Cytometric bead array)

MP50318-4: 68218-4-PBS capture and 68218-5-PBS detection (validated in Cytometric bead array)

Unconjugated mouse monoclonal antibody pair in PBS only (BSA and azide free) storage buffer at a concentration of 1 mg/mL, ready for conjugation.

This conjugation ready format makes antibodies ideal for use in many applications including: ELISAs, multiplex assays requiring matched pairs, mass cytometry, and multiplex imaging applications. Antibody use should be optimized by the end user for each application and assay.

## Storage

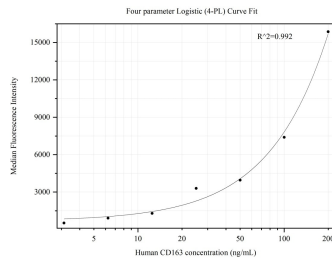
**Storage:**  
Store at -80°C.

**Storage Buffer:**  
PBS Only

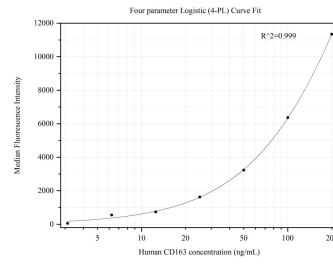
For technical support and original validation data for this product please contact:  
T: 1 (888) 4PTGLAB (1-888-478-4522) (toll free in USA), or 1(312) 455-8498 (outside USA)      E: proteintech@ptglab.com  
W: ptglab.com

This product is exclusively available under Proteintech Group brand and is not available to purchase from any other manufacturer.

## Selected Validation Data



Cytometric bead array standard curve of MP50318-2, CD163 Monoclonal Matched Antibody Pair, PBS Only. Capture antibody: 68218-4-PBS. Detection antibody: 68218-3-PBS. Standard:Ag26721. Range: 3.125-200 ng/mL



Cytometric bead array standard curve of MP50318-4, CD163 Monoclonal Matched Antibody Pair, PBS Only. Capture antibody: 68218-4-PBS. Detection antibody: 68218-5-PBS. Standard:Ag26721. Range: 3.125-200 ng/mL