

For Research Use Only

CD163 Monoclonal antibody, PBS Only (Detector)



Catalog Number: 68218-3-PBS

Basic Information

Catalog Number: 68218-3-PBS	GenBank Accession Number: BC051281	Purification Method: Protein G Magarose purification
Size: 100ug , Concentration: 1 mg/ml by Nanodrop;	GeneID (NCBI): 9332	CloneNo.: 3E6H10
Source: Mouse	ENSEMBL Gene ID: ENSG00000177575	
Isotype: IgG1	UNIPROT ID: Q86VB7	
Immunogen Catalog Number: AG26721	Full Name: CD163 molecule	
	Calculated MW: 1156 aa, 125 kDa	

Applications

Tested Applications:
Cytometric bead array, Indirect ELISA

Species Specificity:
human

Product Information

68218-3-PBS targets CD163 as part of a matched antibody pair:

MP50318-1: 68218-2-PBS capture and 68218-3-PBS detection (validated in Cytometric bead array)

MP50318-2: 68218-4-PBS capture and 68218-3-PBS detection (validated in Cytometric bead array)

MP50318-3: 68218-5-PBS capture and 68218-3-PBS detection (validated in Cytometric bead array)

Unconjugated mouse monoclonal antibody pair in PBS only (BSA and azide free) storage buffer at a concentration of 1 mg/mL, ready for conjugation.

This conjugation ready format makes antibodies ideal for use in many applications including: ELISAs, multiplex assays requiring matched pairs, mass cytometry, and multiplex imaging applications. Antibody use should be optimized by the end user for each application and assay.

Storage

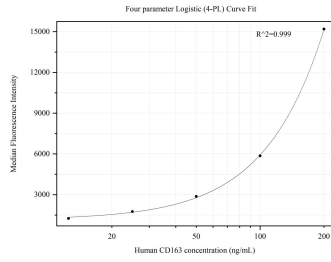
Storage:
Store at -80°C.

Storage Buffer:
PBS Only

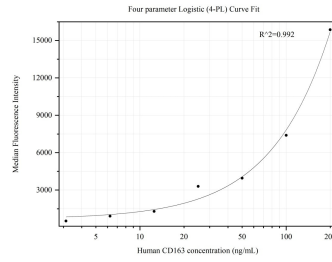
For technical support and original validation data for this product please contact:
T: 1 (888) 4PTGLAB (1-888-478-4522) (toll free in USA), or 1(312) 455-8498 (outside USA) E: proteintech@ptglab.com
W: ptglab.com

This product is exclusively available under Proteintech Group brand and is not available to purchase from any other manufacturer.

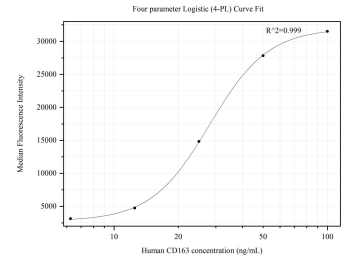
Selected Validation Data



Cytometric bead array standard curve of MP50318-1, CD163 Monoclonal Matched Antibody Pair, PBS Only. Capture antibody: 68218-2-PBS. Detection antibody: 68218-3-PBS. Standard:Ag26721. Range: 12.5-200 ng/mL



Cytometric bead array standard curve of MP50318-2, CD163 Monoclonal Matched Antibody Pair, PBS Only. Capture antibody: 68218-4-PBS. Detection antibody: 68218-3-PBS. Standard:Ag26721. Range: 3.125-200 ng/mL



Cytometric bead array standard curve of MP50318-3, CD163 Monoclonal Matched Antibody Pair, PBS Only. Capture antibody: 68218-5-PBS. Detection antibody: 68218-3-PBS. Standard:Ag26721. Range: 6.25-100 ng/mL