

For Research Use Only

CD163 Monoclonal antibody, PBS Only

Catalog Number: 68218-1-PBS



Basic Information

| | | |
|---|--|---|
| Catalog Number: 68218-1-PBS | GenBank Accession Number: BC051281 | Purification Method: Protein G purification |
| Size: 100ug, Concentration: 1mg/ml by Nanodrop; | GeneID (NCBI): 9332 | CloneNo.: 2G7A5 |
| Source: Mouse | ENSEMBL Gene ID: ENSG00000177575 | |
| Isotype: IgG1 | UNIPROT ID: Q86VB7 | |
| Immunogen Catalog Number: AG26721 | Full Name: CD163 molecule | |
| | Calculated MW: 1156 aa, 125 kDa | |
| | Observed MW: 145-150 kDa | |

Applications

Tested Applications:
WB, IHC, IF-P, IP, Indirect ELISA

Species Specificity:
human

Background Information

CD163 is a transmembrane protein which belongs to the scavenger receptor cysteine-rich (SRCR) superfamily. This protein is a scavenger receptor for the hemoglobin-haptoglobin complex and is a marker for monocytes and macrophages. Soluble CD163 (sCD163), as a result of ectodomain shedding during inflammatory activation of macrophages, circulates in blood and has been suggested as a plasma/serum marker for macrophage activity.

Storage

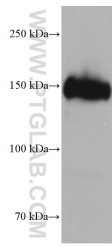
Storage:
Store at -80°C.

Storage Buffer:
PBS Only

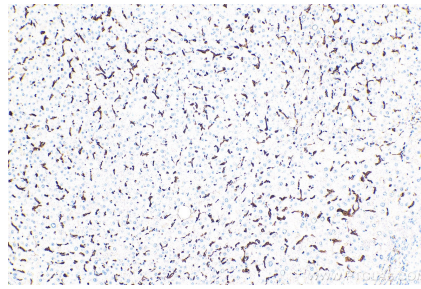
For technical support and original validation data for this product please contact:
T: 1 (888) 4PTGLAB (1-888-478-4522) (toll free in USA), or 1(312) 455-8498 (outside USA) E: proteintech@ptglab.com
W: ptglab.com

This product is exclusively available under Proteintech Group brand and is not available to purchase from any other manufacturer.

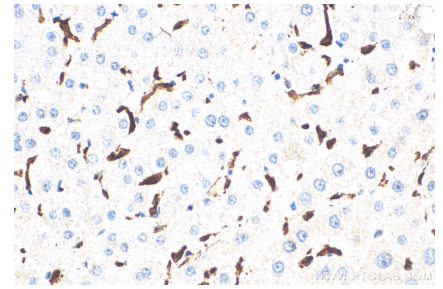
Selected Validation Data



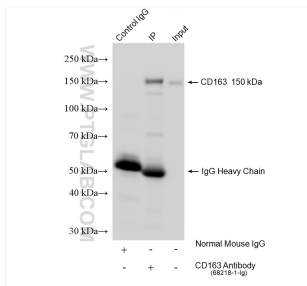
human placenta tissue were subjected to SDS PAGE followed by western blot with 68218-1-Ig (CD163 antibody) at dilution of 1:10000 incubated at room temperature for 1.5 hours. This data was developed using the same antibody clone with 68218-1-PBS in a different storage buffer formulation.



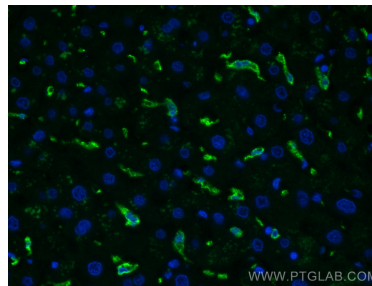
Immunohistochemical analysis of paraffin-embedded human liver tissue slide using 68218-1-Ig (CD163 antibody) at dilution of 1:5000 (under 10x lens). Heat mediated antigen retrieval with Tris-EDTA buffer (pH 9.0). This data was developed using the same antibody clone with 68218-1-PBS in a different storage buffer formulation.



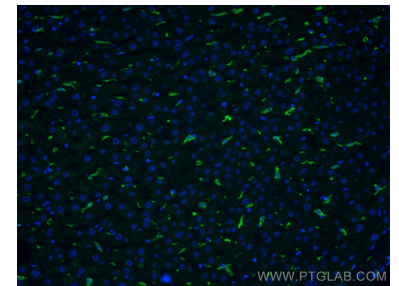
Immunohistochemical analysis of paraffin-embedded human liver tissue slide using 68218-1-Ig (CD163 antibody) at dilution of 1:5000 (under 40x lens). Heat mediated antigen retrieval with Tris-EDTA buffer (pH 9.0). This data was developed using the same antibody clone with 68218-1-PBS in a different storage buffer formulation.



IP result of anti-CD163 (IP:68218-1-Ig, 4ug; Detection:68218-1-Ig 1:4000) with human placenta tissue lysate 1160 ug. This data was developed using the same antibody clone with 68218-1-PBS in a different storage buffer formulation.



Immunofluorescent analysis of (4% PFA) fixed human liver tissue using CD163 antibody (68218-1-Ig, Clone: 2G7A5) at dilution of 1:400 and CoraLite@488-Conjugated AffiniPure Goat Anti-Mouse IgG(H+L). This data was developed using the same antibody clone with 68218-1-PBS in a different storage buffer formulation.



Immunofluorescent analysis of (4% PFA) fixed human liver tissue using CD163 antibody (68218-1-Ig, Clone: 2G7A5) at dilution of 1:400 and CoraLite@488-Conjugated AffiniPure Goat Anti-Mouse IgG(H+L). This data was developed using the same antibody clone with 68218-1-PBS in a different storage buffer formulation.



Immunohistochemical analysis of paraffin-embedded human liver tissue slide using 68218-1-Ig (CD163 antibody) at dilution of 1:5000 (under 10x lens). Heat mediated antigen retrieval with Tris-EDTA buffer (pH 9.0). This data was developed using the same antibody clone with 68218-1-PBS in a different storage buffer formulation.