

For Research Use Only

# RTN3 Monoclonal antibody, PBS Only (Detector)



Catalog Number: 68215-1-PBS

## Basic Information

<b>Catalog Number:</b> 68215-1-PBS	<b>GenBank Accession Number:</b> BC011394	<b>Purification Method:</b> Protein G purification
<b>Size:</b> 100ug, Concentration: 1mg/ml by Nanodrop;	<b>GeneID (NCBI):</b> 10313	<b>CloneNo.:</b> 1E3H11
<b>Source:</b> Mouse	<b>UNIPROT ID:</b> O95197	
<b>Isotype:</b> IgG1	<b>Full Name:</b> reticulon 3	
<b>Immunogen Catalog Number:</b> AG13766	<b>Calculated MW:</b> 113 kDa	
	<b>Observed MW:</b> 25-28 kDa	

## Applications

**Tested Applications:**  
WB, IP, Sandwich ELISA, Indirect ELISA

**Species Specificity:**  
Human

## Product Information

68215-1-PBS targets RTN3 as part of a matched antibody pair.

MP50025-1: 68215-2-PBS capture and 68215-1-PBS detection (validated in Sandwich ELISA)

Unconjugated mouse monoclonal antibody pair in PBS only (BSA and azide free) storage buffer at a concentration of 1 mg/mL, ready for conjugation.

This conjugation ready format makes antibodies ideal for use in many applications including: ELISAs, multiplex assays requiring matched pairs, mass cytometry, and multiplex imaging applications. Antibody use should be optimized by the end user for each application and assay.

## Background Information

Reticulon (RTN) proteins are a group of membrane-bound proteins that largely reside in endoplasmic reticulum (ER). Reticulon proteins share a common sequence feature, the reticulon homology domain (RHD). Four mammalian reticulons (RTN1-4) exist. Reticulon3 (RTN3) is highly expressed in neurons. RTN3 has been shown to modulate secretory pathway protein trafficking. It is a negative modulator of BACE1 ( $\beta$ -secretase) proteolytic activity. RTN3 may induce caspase-8 cascade and apoptosis and may favor BCL2 translocation to the mitochondria upon endoplasmic reticulum stress.

## Storage

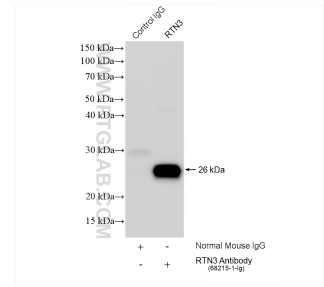
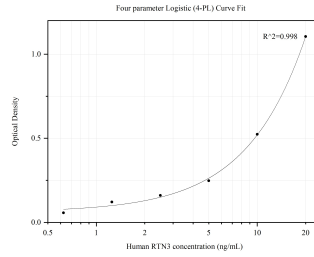
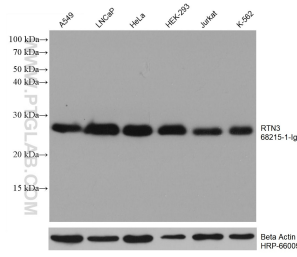
**Storage:**  
Store at -80°C.

**Storage Buffer:**  
100% PBS pH 7.3

For technical support and original validation data for this product please contact:  
T: 1 (888) 4PTGLAB (1-888-478-4522) (toll free in USA), or 1(312) 455-8498 (outside USA)  
E: [proteintech@ptglab.com](mailto:proteintech@ptglab.com)  
W: [ptglab.com](http://ptglab.com)

**This product is exclusively available under Proteintech Group brand and is not available to purchase from any other manufacturer.**

## Selected Validation Data



Various lysates were subjected to SDS PAGE followed by western blot with 68215-1-Ig (RTN3 antibody) at dilution of 1:10000 incubated at room temperature for 1.5 hours. The membrane was stripped and reblotted with HRP-conjugated Beta Actin Monoclonal antibody (HRP-66009) as loading control. This data was developed using the same antibody clone with 68215-1-PBS in a different storage buffer formulation.

Sandwich ELISA standard curve of MP50025-1, RTN3 Monoclonal Matched Antibody Pair, PBS Only. Capture antibody: 68215-2-PBS. Detection antibody: HRP-conjugated 68215-1-PBS. Standard: Ag13766. Range: 0.625-20 ng/mL.

IP result of anti-RTN3 (IP:68215-1-Ig, 4ug; Detection:68215-1-Ig 1:2000) with A549 cells lysate 840 ug. This data was developed using the same antibody clone with 68215-1-PBS in a different storage buffer formulation.