

For Research Use Only

NF90/ILF3 Monoclonal antibody, PBS Only (Capture)

Catalog Number: 68213-1-PBS



Basic Information

Catalog Number: 68213-1-PBS	GenBank Accession Number: BC064836	Purification Method: Protein G purification
Size: 100ug, Concentration: 1mg/ml by Nanodrop;	GeneID (NCBI): 3609	CloneNo.: 2H10G3
Source: Mouse	UNIPROT ID: Q12906	
Isotype: IgG1	Full Name: interleukin enhancer binding factor 3, 90kDa	
Immunogen Catalog Number: AG30868	Calculated MW: 894 aa, 95 kDa	
	Observed MW: 90 kDa, 110 kDa	

Applications

Tested Applications:
WB, IHC, Cytometric bead array, Indirect ELISA

Species Specificity:
human, mouse, rat

Product Information

68213-1-PBS targets NF90/ILF3 as part of a matched antibody pair:

MP50472-3: 68213-1-PBS capture and 68213-4-PBS detection (validated in Cytometric bead array)

Unconjugated mouse monoclonal antibody pair in PBS only (BSA and azide free) storage buffer at a concentration of 1 mg/mL, ready for conjugation.

This conjugation ready format makes antibodies ideal for use in many applications including: ELISAs, multiplex assays requiring matched pairs, mass cytometry, and multiplex imaging applications. Antibody use should be optimized by the end user for each application and assay.

Storage

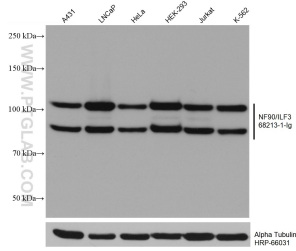
Storage:
Store at -80°C.

Storage Buffer:
PBS Only

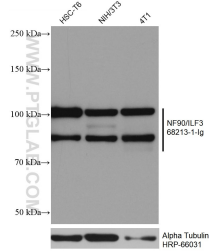
For technical support and original validation data for this product please contact:
T: 1 (888) 4PTGLAB (1-888-478-4522) (toll free in USA), or 1(312) 455-8498 (outside USA) E: proteintech@ptglab.com
W: ptglab.com

This product is exclusively available under Proteintech Group brand and is not available to purchase from any other manufacturer.

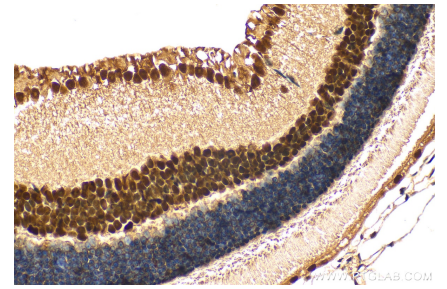
Selected Validation Data



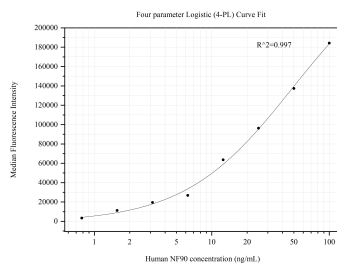
A431 cells were subjected to SDS PAGE followed by western blot with 68213-1-Ig (NF90/ILF3 antibody) at dilution of 1:20000 incubated at room temperature for 1.5 hours. The membrane was stripped and reblotted with HRP-conjugated Alpha Tubulin Monoclonal antibody (HRP-66031) as loading control. This data was developed using the same antibody clone with 68213-1-PBS in a different storage buffer formulation.



Various lysates were subjected to SDS PAGE followed by western blot with 68213-1-Ig (NF90/ILF3 antibody) at dilution of 1:20000 incubated at room temperature for 1.5 hours. The membrane was stripped and reblotted with HRP-conjugated Alpha Tubulin Monoclonal antibody (HRP-66031) as loading control. This data was developed using the same antibody clone with 68213-1-PBS in a different storage buffer formulation.



Immunohistochemical analysis of paraffin-embedded mouse eye tissue slide using 68213-1-Ig (NF90/ILF3 antibody) at dilution of 1:2000 (under 40x lens). Heat mediated antigen retrieval with Tris-EDTA buffer (pH 9.0). This data was developed using the same antibody clone with 68213-1-PBS in a different storage buffer formulation.



Cytometric bead array standard curve of MP50472-3, NF90,ILF3 Monoclonal Matched Antibody Pair, PBS Only. Capture antibody: 68213-1-PBS. Detection antibody: 68213-4-PBS. Standard:Ag30868. Range: 0.781-100 ng/mL