

For Research Use Only

NOTCH2/NOTCH2NL Monoclonal antibody, PBS Only

Catalog Number: 68212-1-PBS



Basic Information

Catalog Number: 68212-1-PBS	GenBank Accession Number: BC019835	Purification Method: Protein G purification
Size: 100ug , Concentration: 1mg/ml by Nanodrop;	GeneID (NCBI): 388677	CloneNo.: 2D5E1
Source: Mouse	UNIPROT ID: PODPK4	
Isotype: IgG1	Full Name: Notch homolog 2 (Drosophila) N-terminal like	
Immunogen Catalog Number: AG1679	Calculated MW: 265 kDa	
	Observed MW: 250-265 kDa	

Applications

Tested Applications:
WB, IF/ICC, Indirect ELISA

Species Specificity:
human

Background Information

Notch 2 is a member of the notch family. Members of this Type 1 transmembrane protein family share structural characteristics including an extracellular domain consisting of multiple epidermal growth factor-like (EGF) repeats, and an intracellular domain consisting of multiple, different domain types. Notch family members play a role in a variety of developmental processes by controlling cell fate decisions. Notch2, like other Norch genes, functions in development of various tissues. This antibody can recognize NOTCH2 and NOTCH2NL. The antibody detects the full-length NOTCH2 protein about 250-265 kDa.

Storage

Storage:
Store at -80°C.

Storage Buffer:
PBS Only

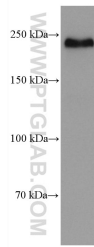
For technical support and original validation data for this product please contact:

T: 1 (888) 4PTGLAB (1-888-478-4522) (toll free in USA), or 1(312) 455-8498 (outside USA)

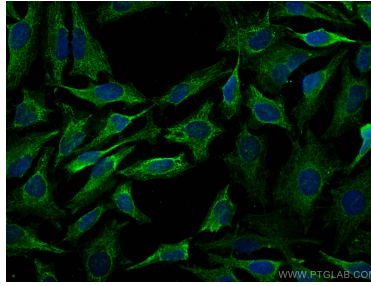
E: proteintech@ptglab.com
W: ptglab.com

This product is exclusively available under Proteintech Group brand and is not available to purchase from any other manufacturer.

Selected Validation Data



hTERT-RPE1 cells were subjected to SDS PAGE followed by western blot with 68212-1-Ig (NOTCH2 antibody) at dilution of 1:10000 incubated at room temperature for 1.5 hours. This data was developed using the same antibody clone with 68212-1-PBS in a different storage buffer formulation.



Immunofluorescent analysis of (4% PFA) fixed HeLa cells using NOTCH2/NOTCH2NL antibody (68212-1-Ig, Clone: 2D5E1) at dilution of 1:800 and CoraLite®488-Conjugated AffiniPure Goat Anti-Mouse IgG(H+L). This data was developed using the same antibody clone with 68212-1-PBS in a different storage buffer formulation.