

For Research Use Only

LETM1 Monoclonal antibody, PBS Only (Detector)

Catalog Number: 68208-1-PBS

Featured Product



Basic Information

Catalog Number: 68208-1-PBS	GenBank Accession Number: BC021208	Purification Method: Protein G purification
Size: 100ug, Concentration: 1mg/ml by Nanodrop;	GeneID (NCBI): 3954	CloneNo.: 2B9B9
Source: Mouse	UNIPROT ID: O95202	
Isotype: IgG1	Full Name: leucine zipper-EF-hand containing transmembrane protein 1	
Immunogen Catalog Number: AG8851	Calculated MW: 739 aa, 83 kDa	
	Observed MW: 83 kDa	

Applications

Tested Applications:
WB, IHC, IF/ICC, Cytometric bead array, Indirect ELISA

Species Specificity:
human, rat

Product Information

68208-1-PBS targets LETM1 as part of a matched antibody pair:

MP50653-2: 68208-4-PBS capture and 68208-1-PBS detection (validated in Cytometric bead array)

Unconjugated mouse monoclonal antibody pair in PBS only (BSA and azide free) storage buffer at a concentration of 1 mg/mL, ready for conjugation.

This conjugation ready format makes antibodies ideal for use in many applications including: ELISAs, multiplex assays requiring matched pairs, mass cytometry, and multiplex imaging applications. Antibody use should be optimized by the end user for each application and assay.

Background Information

LETM1 is a mitochondrial inner membrane protein. It functions to maintain the mitochondrial tubular shapes and is required for normal mitochondrial morphology and cellular viability. It served as an anchor protein for complex formation between mitochondria and ribosome, and regulated mitochondrial biogenesis. It was also identified in Wolf-Hirschhorn syndrome, and was deleted in nearly all patients with the syndrome. A recent study determined that adenovirus-mediated LETM1 may provide a useful target for designing lung tumor prevention and treatment.

Storage

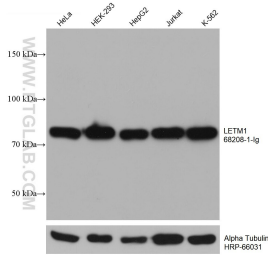
Storage:
Store at -80°C.

Storage Buffer:
PBS Only

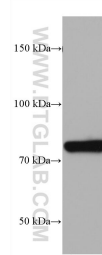
For technical support and original validation data for this product please contact:
T: 1 (888) 4PTGLAB (1-888-478-4522) (toll free in USA), or 1(312) 455-8498 (outside USA) E: proteintech@ptglab.com
W: ptglab.com

This product is exclusively available under Proteintech Group brand and is not available to purchase from any other manufacturer.

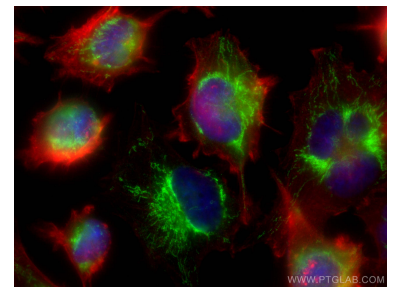
Selected Validation Data



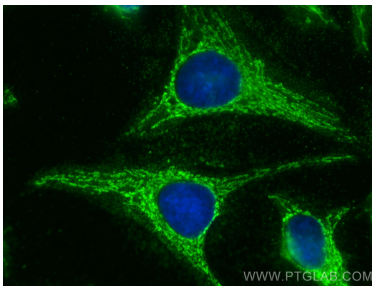
HeLa cells were subjected to SDS PAGE followed by western blot with 68208-1-Ig (LETM1 antibody) at dilution of 1:10000 incubated at room temperature for 1.5 hours. The membrane was stripped and reblotted with HRP-conjugated Alpha Tubulin Monoclonal antibody (HRP-66031) as loading control. This data was developed using the same antibody clone with 68208-1-PBS in a different storage buffer formulation.



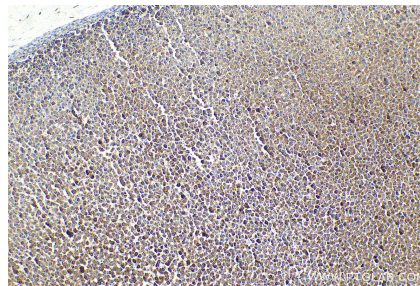
rat heart tissue were subjected to SDS PAGE followed by western blot with 68208-1-Ig (LETM1 antibody) at dilution of 1:10000 incubated at room temperature for 1.5 hours. This data was developed using the same antibody clone with 68208-1-PBS in a different storage buffer formulation.



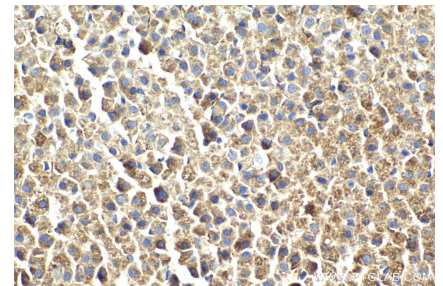
Immunofluorescent analysis of (-20°C Ethanol) fixed U-251 cells using LETM1 antibody (68208-1-Ig, Clone: 2B9B9) at dilution of 1:400 and Coralite@488-Conjugated AffiniPure Goat Anti-Mouse IgG(H+L), CL594-Phalloidin (red). This data was developed using the same antibody clone with 68208-1-PBS in a different storage buffer formulation.



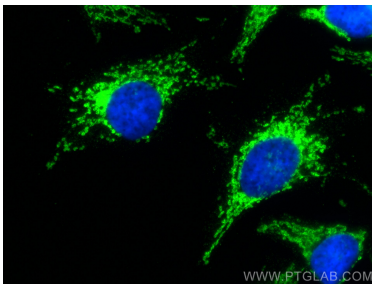
Immunofluorescent analysis of (-20°C Methanol) fixed HeLa cells using LETM1 antibody (68208-1-Ig, Clone: 2B9B9) at dilution of 1:800 and Coralite@488-Conjugated AffiniPure Goat Anti-Mouse IgG(H+L). This data was developed using the same antibody clone with 68208-1-PBS in a different storage buffer formulation.



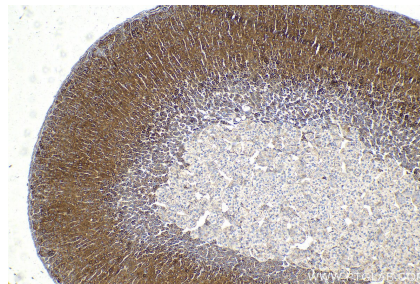
Immunohistochemical analysis of paraffin-embedded rat adrenal gland tissue slide using 68208-1-Ig (LETM1 antibody) at dilution of 1:2000 (under 10x lens). Heat mediated antigen retrieval with Tris-EDTA buffer (pH 9.0). This data was developed using the same antibody clone with 68208-1-PBS in a different storage buffer formulation.



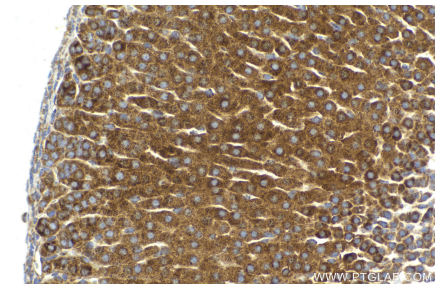
Immunohistochemical analysis of paraffin-embedded rat adrenal gland tissue slide using 68208-1-Ig (LETM1 antibody) at dilution of 1:2000 (under 40x lens). Heat mediated antigen retrieval with Tris-EDTA buffer (pH 9.0). This data was developed using the same antibody clone with 68208-1-PBS in a different storage buffer formulation.



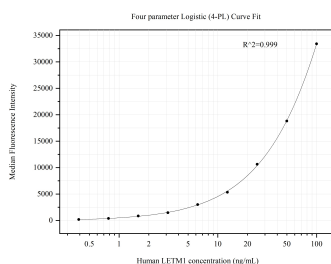
Immunofluorescent analysis of (-20°C Methanol) fixed HeLa cells using LETM1 antibody (68208-1-Ig, Clone: 2B9B9) at dilution of 1:400 and Coralite@488-Conjugated AffiniPure Goat Anti-Mouse IgG(H+L). This data was developed using the same antibody clone with 68208-1-PBS in a different storage buffer formulation.



Immunohistochemical analysis of paraffin-embedded mouse adrenal gland tissue slide using 68208-1-Ig (LETM1 antibody) at dilution of 1:2000 (under 10x lens). Heat mediated antigen retrieval with Tris-EDTA buffer (pH 9.0). This data was developed using the same antibody clone with 68208-1-PBS in a different storage buffer formulation.



Immunohistochemical analysis of paraffin-embedded mouse adrenal gland tissue slide using 68208-1-Ig (LETM1 antibody) at dilution of 1:2000 (under 40x lens). Heat mediated antigen retrieval with Tris-EDTA buffer (pH 9.0). This data was developed using the same antibody clone with 68208-1-PBS in a different storage buffer formulation.



Cytometric bead array standard curve of MP50653-2, LETM1 Monoclonal Matched Antibody Pair, PBS Only. Capture antibody: 68208-4-PBS. Detection antibody: 68208-1-PBS. Standard: Ag8851. Range: 0.391-100 ng/mL