

For Research Use Only

# NCAM2 Monoclonal antibody, PBS Only



Catalog Number: 68205-1-PBS

## Basic Information

<b>Catalog Number:</b> 68205-1-PBS	<b>GenBank Accession Number:</b> BC052946	<b>Purification Method:</b> Protein A purification
<b>Size:</b> 100ug, Concentration: 1 mg/ml by Nanodrop;	<b>GeneID (NCBI):</b> 4685	<b>CloneNo.:</b> 1D6C12
<b>Source:</b> Mouse	<b>UNIPROT ID:</b> O15394	
<b>Isotype:</b> IgG2b	<b>Full Name:</b> neural cell adhesion molecule 2	
<b>Immunogen Catalog Number:</b> AG4935	<b>Calculated MW:</b> 93 kDa	
	<b>Observed MW:</b> 93 kDa, 125 kDa	

## Applications

**Tested Applications:**  
WB, IF, Indirect ELISA

**Species Specificity:**  
Human, Rabbit, Mouse, Rat

## Storage

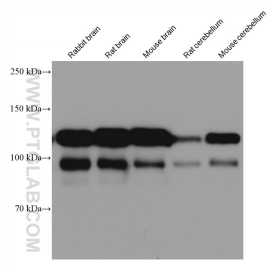
**Storage:**  
Store at -80°C.

**Storage Buffer:**  
PBS Only

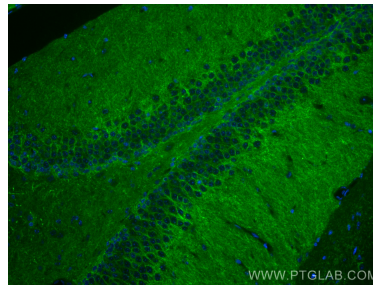
For technical support and original validation data for this product please contact:  
T: 1 (888) 4PTGLAB (1-888-478-4522) (toll free in USA), or 1(312) 455-8498 (outside USA)      E: [proteintech@ptglab.com](mailto:proteintech@ptglab.com)  
W: [ptglab.com](http://ptglab.com)

This product is exclusively available under Proteintech Group brand and is not available to purchase from any other manufacturer.

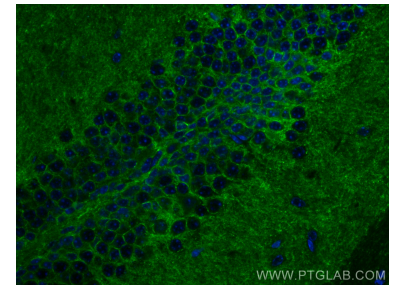
## Selected Validation Data



Various lysates were subjected to SDS PAGE followed by western blot with 68205-1-Ig (NCAM2 antibody) at dilution of 1:10000 incubated at room temperature for 1.5 hours. This data was developed using the same antibody clone with 68205-1-PBS in a different storage buffer formulation.



Immunofluorescent analysis of (4% PFA) fixed mouse brain tissue using NCAM2 antibody (68205-1-Ig, Clone: 1D6C12 ) at dilution of 1:200 and CoraLite®488-Conjugated AffiniPure Goat Anti-Mouse IgG(H+L). This data was developed using the same antibody clone with 68205-1-PBS in a different storage buffer formulation.



Immunofluorescent analysis of (4% PFA) fixed mouse brain tissue using NCAM2 antibody (68205-1-Ig, Clone: 1D6C12 ) at dilution of 1:200 and CoraLite®488-Conjugated AffiniPure Goat Anti-Mouse IgG(H+L). This data was developed using the same antibody clone with 68205-1-PBS in a different storage buffer formulation.