

For Research Use Only

# ARF4 Monoclonal antibody, PBS Only

Catalog Number: 68204-1-PBS

Featured Product



## Basic Information

<b>Catalog Number:</b> 68204-1-PBS	<b>GenBank Accession Number:</b> BC003364	<b>Purification Method:</b> Protein A purification
<b>Size:</b> 100ug , Concentration: 1mg/ml by Nanodrop;	<b>GeneID (NCBI):</b> 378	<b>CloneNo.:</b> 2A4B8
<b>Source:</b> Mouse	<b>UNIPROT ID:</b> P18085	
<b>Isotype:</b> IgG2b	<b>Full Name:</b> ADP-ribosylation factor 4	
<b>Immunogen Catalog Number:</b> AG25522	<b>Calculated MW:</b> 180 aa, 21 kDa	
	<b>Observed MW:</b> 18 kDa	

## Applications

**Tested Applications:**  
WB, IHC, IF/ICC, FC (Intra), Indirect ELISA

**Species Specificity:**  
human, mouse, rat

## Background Information

ARF4, also named as ARF2, belongs to the small GTPase superfamily and Arf family. ADP-ribosylation factors (ARFs) are members of the ARF family of GTP-binding proteins of the Ras superfamily, with 20 kDa protein size. ARFs bind and regulate GTP/GDP cycle by alternating between the active GTP-bound and inactive GDP-bound conformations. ARF family proteins are essential and ubiquitous in eukaryotes. Six highly conserved members of the family have been identified in mammalian cells. They function in vesicular traffic and actin remodelling and other bioprocesses in cells. ARF4 and ARF5 are class II ARFs. Their function are not fully described. (PMID: 7759471, PMID: 16042562). This antibody can bind ARFs for the close sequences.

## Storage

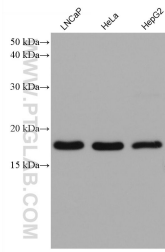
**Storage:**  
Store at -80°C.

**Storage Buffer:**  
PBS Only

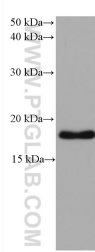
For technical support and original validation data for this product please contact:  
T: 1 (888) 4PTGLAB (1-888-478-4522) (toll free in USA), or 1(312) 455-8498 (outside USA)  
E: proteintech@ptglab.com  
W: ptglab.com

This product is exclusively available under Proteintech Group brand and is not available to purchase from any other manufacturer.

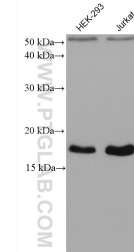
## Selected Validation Data



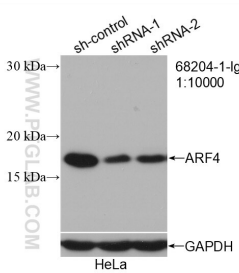
Various lysates were subjected to SDS PAGE followed by western blot with 68204-1-Ig (ARF4 antibody) at dilution of 1:20000 incubated at room temperature for 1.5 hours. This data was developed using the same antibody clone with 68204-1-PBS in a different storage buffer formulation.



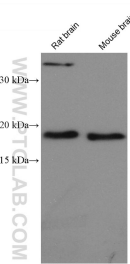
A549 cells were subjected to SDS PAGE followed by western blot with 68204-1-Ig (ARF4 antibody) at dilution of 1:20000 incubated at room temperature for 1.5 hours. This data was developed using the same antibody clone with 68204-1-PBS in a different storage buffer formulation.



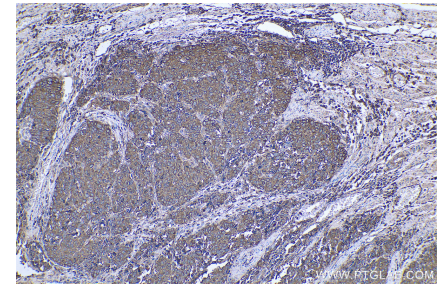
Various lysates were subjected to SDS PAGE followed by western blot with 68204-1-Ig (ARF4 antibody) at dilution of 1:20000 incubated at room temperature for 1.5 hours. This data was developed using the same antibody clone with 68204-1-PBS in a different storage buffer formulation.



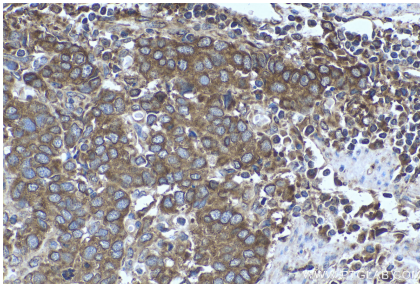
WB result of ARF4 antibody (68204-1-Ig; 1:10000; incubated at room temperature for 1.5 hours) with sh-Control and sh-ARF4 transfected HeLa cells. This data was developed using the same antibody clone with 68204-1-PBS in a different storage buffer formulation.



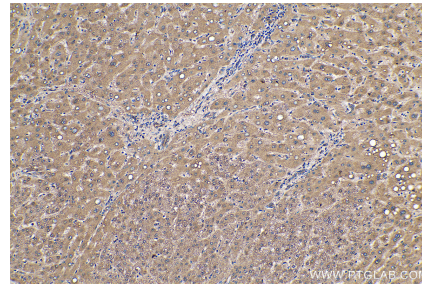
Various lysates were subjected to SDS PAGE followed by western blot with 68204-1-Ig (ARF4 antibody) at dilution of 1:20000 incubated at room temperature for 1.5 hours. This data was developed using the same antibody clone with 68204-1-PBS in a different storage buffer formulation.



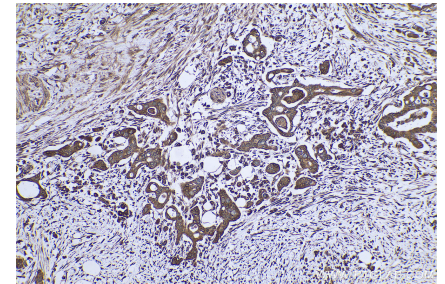
Immunohistochemical analysis of paraffin-embedded human stomach cancer tissue slide using 68204-1-Ig (ARF4 antibody) at dilution of 1:2000 (under 10x lens). Heat mediated antigen retrieval with Tris-EDTA buffer (pH 9.0). This data was developed using the same antibody clone with 68204-1-PBS in a different storage buffer formulation.



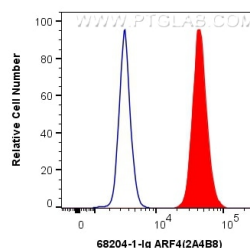
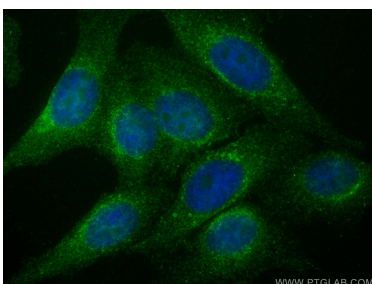
Immunohistochemical analysis of paraffin-embedded human stomach cancer tissue slide using 68204-1-Ig (ARF4 antibody) at dilution of 1:2000 (under 40x lens). Heat mediated antigen retrieval with Tris-EDTA buffer (pH 9.0). This data was developed using the same antibody clone with 68204-1-PBS in a different storage buffer formulation.



Immunohistochemical analysis of paraffin-embedded human liver tissue slide using 68204-1-Ig (ARF4 antibody) at dilution of 1:8000 (under 10x lens). Heat mediated antigen retrieval with Tris-EDTA buffer (pH 9.0). This data was developed using the same antibody clone with 68204-1-PBS in a different storage buffer formulation.



Immunohistochemical analysis of paraffin-embedded human pancreas cancer tissue slide using 68204-1-Ig (ARF4 antibody) at dilution of 1:2000 (under 10x lens). Heat mediated antigen retrieval with Tris-EDTA buffer (pH 9.0). This data was developed using the same antibody clone with 68204-1-PBS in a different storage buffer formulation.



Immunofluorescent analysis of (4% PFA) fixed HepG2 cells using ARF4 antibody (68204-1-Ig, Clone: 2A4B8) at dilution of 1:800 and CoraLite®488-Conjugated AffiniPure Goat Anti-Mouse IgG(H+L). This data was developed using the same antibody clone with 68204-1-PBS in a different storage buffer formulation.

1X10<sup>6</sup> K-562 cells were intracellularly stained with 0.4 ug Anti-Human ARF4 (68204-1-Ig, Clone:2A4B8) and CoraLite®488-Conjugated AffiniPure Goat Anti-Mouse IgG(H+L) at dilution 1:1000 (red), or 0.4 ug Mouse IgG2b Isotype Control (66360-3-Ig, Clone: K11B8C4B5) (blue). Cells were fixed with 4% PFA and permeabilized with Flow Cytometry Perm Buffer (PF00011-C). This data was developed using the same antibody clone with 68204-1-PBS in a different storage buffer

