

For Research Use Only

# RPAP1 Monoclonal antibody, PBS Only



Catalog Number: 68193-1-PBS

## Basic Information

<b>Catalog Number:</b> 68193-1-PBS	<b>GenBank Accession Number:</b> BC000246	<b>Purification Method:</b> Protein G purification
<b>Size:</b> 100ug , Concentration: 1mg/ml by Nanodrop;	<b>GeneID (NCBI):</b> 26015	<b>CloneNo.:</b> 2A6H5
<b>Source:</b> Mouse	<b>UNIPROT ID:</b> Q9BWH6	
<b>Isotype:</b> IgG1	<b>Full Name:</b> RNA polymerase II associated protein 1	
<b>Immunogen Catalog Number:</b> AG7856	<b>Calculated MW:</b> 153 kDa	
	<b>Observed MW:</b> 153 kDa	

## Applications

**Tested Applications:**  
WB, Indirect ELISA

**Species Specificity:**  
Human, mouse, rat

## Background Information

RNA polymerase II-associated protein 1 (RPAP1) encodes a nuclear 153-kDa protein, and forms an interface between the RNA polymerase II (RNAPII) enzyme and chaperone/scaffolding protein, suggesting that it is required to connect RNA polymerase II to regulators of protein complex formation. RPAP1 is required for interaction of the RNA polymerase II complex with acetylated histone H3 and the subsequent DNA transcription.

## Storage

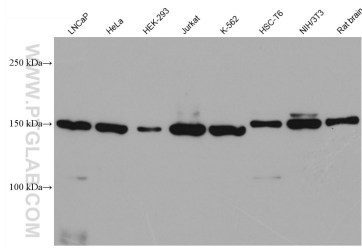
**Storage:**  
Store at -80°C.

**Storage Buffer:**  
PBS Only

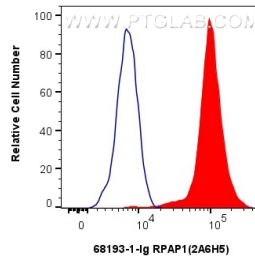
For technical support and original validation data for this product please contact:  
T: 1 (888) 4PTGLAB (1-888-478-4522) (toll free in USA), or 1(312) 455-8498 (outside USA)      E: [proteintech@ptglab.com](mailto:proteintech@ptglab.com)  
W: [ptglab.com](http://ptglab.com)

This product is exclusively available under Proteintech Group brand and is not available to purchase from any other manufacturer.

## Selected Validation Data



Various lysates were subjected to SDS PAGE followed by western blot with 68193-1-Ig (RPAP1 antibody) at dilution of 1:20000 incubated at room temperature for 1.5 hours. This data was developed using the same antibody clone with 68193-1-PBS in a different storage buffer formulation.



$1 \times 10^6$  HeLa cells were intracellularly stained with 0.8 ug RPAP1 Monoclonal antibody (68193-1-Ig, Clone:2A6H5) and CoraLite®488-Conjugated AffiniPure Goat Anti-Mouse IgG(H+L) (SA00013-1)(red), or 0.8 ug Mouse IgG1 isotype control Mouse McAb (66360-1-Ig, Clone: 1F8D3) (blue). Cells were fixed and permeabilized with True-Nuclear Transcription Factor Buffer Set. This data was developed using the same antibody clone with 68193-1-PBS in a different storage buffer