

For Research Use Only

# PSMD7 Monoclonal antibody, PBS Only



Catalog Number: 68188-1-PBS

Featured Product

## Basic Information

**Catalog Number:**

68188-1-PBS

**Size:**

100ug, Concentration: 1 mg/ml by Nanodrop;

**Source:**

Mouse

**Isotype:**

IgG1

**Immunogen Catalog Number:**

AG9305

**GenBank Accession Number:**

BC012606

**GeneID (NCBI):**

5713

**UNIPROT ID:**

P51665

**Full Name:**

proteasome (prosome, macropain) 26S subunit, non-ATPase, 7

**Calculated MW:**

324 aa, 37 kDa

**Observed MW:**

37 kDa

**Purification Method:**

Protein G purification

**CloneNo.:**

3E10E7

## Applications

**Tested Applications:**

WB, Indirect ELISA

**Species Specificity:**

Human

## Background Information

Proteasome 26S subunit, non-ATPase 7 (PSMD7), an ATP-independent component of the 19S regulatory subunit, is a member of the JAMM/MPN domain-associated metallopeptidase (JAMM) DUB family. PSMD7, as a core component of the 26S proteasome, is critical for the degradation of ubiquitinated proteins in the proteasome. PSMD7 arrests cell cycle in the G2/M phase during HIV infection. The molecular weight of PSMD7 is 37 kDa. (PMID: 34512150, 34234864)

## Storage

**Storage:**

Store at -80°C.

**Storage Buffer:**

PBS Only

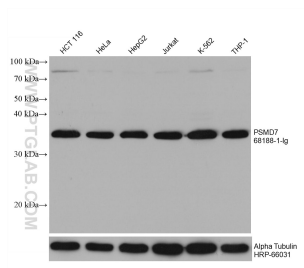
For technical support and original validation data for this product please contact:

T: 1 (888) 4PTGLAB (1-888-478-4522) (toll free in USA), or 1(312) 455-8498 (outside USA)

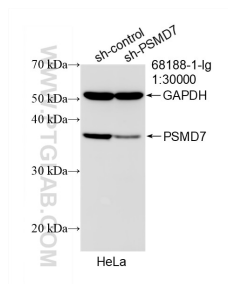
E: [proteintech@ptglab.com](mailto:proteintech@ptglab.com)  
W: [ptglab.com](http://ptglab.com)

This product is exclusively available under Proteintech Group brand and is not available to purchase from any other manufacturer.

## Selected Validation Data



Various lysates were subjected to SDS PAGE followed by western blot with 68188-1-Ig (PSMD7 antibody) at dilution of 1:20000 incubated at room temperature for 1.5 hours. The membrane was stripped and reblotted with HRP-conjugated Alpha Tubulin Monoclonal antibody (HRP-66031) as loading control. This data was developed using the same antibody clone with 68188-1-PBS in a different storage buffer formulation.



WB result of PSMD7 antibody (68188-1-Ig; 1:30000; incubated at room temperature for 1.5 hours) with sh-Control and sh-PSMD7 transfected HeLa cells. This data was developed using the same antibody clone with 68188-1-PBS in a different storage buffer formulation.