

For Research Use Only

ENOPH1 Monoclonal antibody, PBS Only (Capture)



Catalog Number: 68179-1-PBS

Basic Information

Catalog Number: 68179-1-PBS	GenBank Accession Number: BC065815	Purification Method: Protein G purification
Size: 100ug, Concentration: 1mg/ml by Nanodrop;	GeneID (NCBI): 58478	CloneNo.: 1F1E11
Source: Mouse	UNIPROT ID: Q9UHY7	
Isotype: IgG1	Full Name: enolase-phosphatase 1	
Immunogen Catalog Number: AG12553	Calculated MW: 261 aa, 29 kDa	
	Observed MW: 29-35 kDa	

Applications

Tested Applications:
WB, Indirect ELISA, Cytometric bead array

Species Specificity:
Human, Mouse, Rat, Rabbit, Pig

Product Information

68179-1-PBS targets ENOPH1 as part of a matched antibody pair:

MP50127-1: 68179-1-PBS capture and 68179-2-PBS detection (validated in Cytometric bead array, Sandwich ELISA)

Unconjugated mouse monoclonal antibody pair in PBS only (BSA and azide free) storage buffer at a concentration of 1 mg/mL, ready for conjugation.

This conjugation ready format makes antibodies ideal for use in many applications including: ELISAs, multiplex assays requiring matched pairs, mass cytometry, and multiplex imaging applications. Antibody use should be optimized by the end user for each application and assay.

Background Information

ENOPH1, also named as MASA and MSTP145, belongs to the HAD-like hydrolase superfamily and MasA/MtnC family. ENOPH1 is a newly identified enzyme involved in L-methionine biosynthesis, which is associated with anxiety and depression. Studies have shown that ENOPH1 plays a crucial role in promoting the proliferation and migration of glioma cells (PMID: 32654229). ENOPH1 has 2 isoforms with the molecular mass of 13 and 29 kDa.

Storage

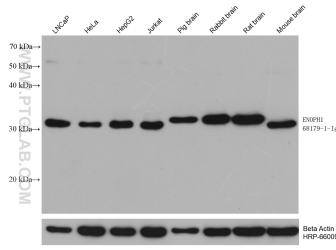
Storage:
Store at -80°C.

Storage Buffer:
PBS Only

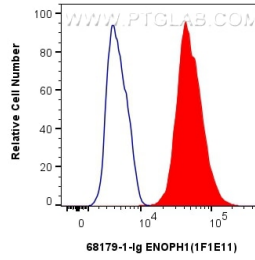
For technical support and original validation data for this product please contact:
T: 1 (888) 4PTGLAB (1-888-478-4522) (toll free in USA), or 1(312) 455-8498 (outside USA) E: proteintech@ptglab.com
W: ptglab.com

This product is exclusively available under Proteintech Group brand and is not available to purchase from any other manufacturer.

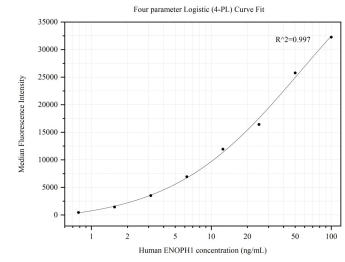
Selected Validation Data



Various lysates were subjected to SDS PAGE followed by western blot with 68179-1-Ig (ENOPH1 antibody) at dilution of 1:20000 incubated at room temperature for 1.5 hours. The membrane was stripped and reblotted with HRP-conjugated Beta Actin Monoclonal antibody (HRP-66009) as loading control. This data was developed using the same antibody clone with 68179-1-PBS in a different storage buffer formulation.



1×10^6 HepG2 cells were intracellularly stained with 0.4 ug ENOPH1 Monoclonal antibody (68179-1-Ig, Clone:1F1E11) and CoraLite®488-Conjugated AffiniPure Goat Anti-Mouse IgG(H+L) (SA00013-1)(red), or 0.4 ug Mouse IgG1 isotype control Mouse McAb (66360-1-Ig, Clone: 1F8D3) (blue). Cells were fixed with 4% PFA and permeabilized with Flow Cytometry Perm Buffer (PF00011-C). This data was developed using the same antibody clone with 68179-1-PBS in a



Cytometric bead array standard curve of MP50127-1, ENOPH1 Monoclonal Matched Antibody Pair, PBS Only. Capture antibody: 68179-1-PBS. Detection antibody: 68179-2-PBS. Standard: Ag12553. Range: 0.781-100 ng/mL.