

For Research Use Only

SEPT6 Monoclonal antibody, PBS Only



Catalog Number: 68173-1-PBS

Basic Information

Catalog Number: 68173-1-PBS	GenBank Accession Number: BC036240	Purification Method: Protein G purification
Size: 100ug, Concentration: 1 mg/ml by Nanodrop;	GeneID (NCBI): 23157	CloneNo.: 1B1G1
Source: Mouse	UNIPROT ID: Q14141	
Isotype: IgG1	Full Name: septin 6	
Immunogen Catalog Number: AG32736	Calculated MW: 434 aa, 50 kDa	
	Observed MW: 50 kDa	

Applications

Tested Applications:
WB, IF, Indirect ELISA

Species Specificity:
Human, mouse, pig, rabbit, rat

Background Information

Septin 6 belongs to the septins family which are conserved GTP-binding proteins functioning as dynamic, regulatable scaffolds for the recruitment of other proteins. They are involved in membrane dynamics, vesicle trafficking, apoptosis, and cytoskeletal remodeling. Septin 6 also interacts with hepatitis C virus (HCV) NS5b RNA polymerase and NS5b-binding protein (HNRNPA1) and may play a role in HCV RNA replication.

Storage

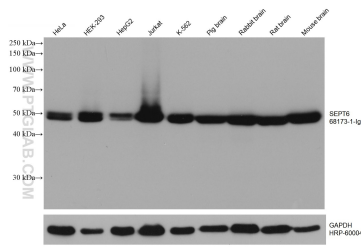
Storage:
Store at -80°C.

Storage Buffer:
PBS Only

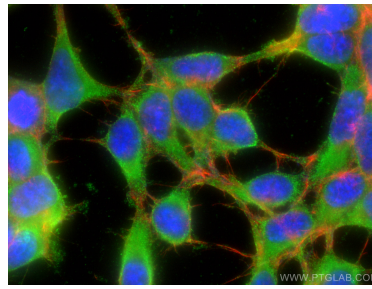
For technical support and original validation data for this product please contact:
T: 1 (888) 4PTGLAB (1-888-478-4522) (toll free in USA), or 1(312) 455-8498 (outside USA) E: proteintech@ptglab.com
W: ptglab.com

This product is exclusively available under Proteintech Group brand and is not available to purchase from any other manufacturer.

Selected Validation Data



Various lysates were subjected to SDS PAGE followed by western blot with 68173-1-Ig (SEPT6 antibody) at dilution of 1:10000 incubated at room temperature for 1.5 hours. The membrane was stripped and reblotted with HRP-conjugated GAPDH Monoclonal antibody (HRP-60004) as loading control. This data was developed using the same antibody clone with 68173-1-PBS in a different storage buffer formulation.



Immunofluorescent analysis of (-20°C Ethanol) fixed HEK-293 cells using SEPT6 antibody (68173-1-Ig, Clone: 1B1G1) at dilution of 1:800 and CoraLite® 488-Conjugated AffiniPure Goat Anti-Mouse IgG(H+L), CL594-Phalloidin (red). This data was developed using the same antibody clone with 68173-1-PBS in a different storage buffer formulation.