

For Research Use Only

TCEB1 Monoclonal antibody, PBS Only



Catalog Number: 68164-1-PBS

Basic Information

Catalog Number: 68164-1-PBS	GenBank Accession Number: BC013809	Purification Method: Protein A purification
Size: 100ug, Concentration: 1 mg/ml by Nanodrop;	GeneID (NCBI): 6921	CloneNo.: 2D6D8
Source: Mouse	UNIPROT ID: Q15369	
Isotype: IgG1	Full Name: transcription elongation factor B (SIII), polypeptide 1 (15kDa, elongin C)	
Immunogen Catalog Number: AG22601	Calculated MW: 112 aa, 12 kDa	
	Observed MW: 12 kDa	

Applications

Tested Applications:
WB, IF, Indirect ELISA

Species Specificity:
Human, mouse, rat

Background Information

TCEB1, also named as RNA polymerase II transcription factor SIII subunit C, belongs to the SKP1 family. It mediates the ubiquitination of ECS-E3 ubiquitin-protein ligase complexes. TCEB1 is overexpressed in prostate cancer cell line PC-3 and breast cancer cell line SK-BR-3. TCEB1 also promotes invasion of prostate cancer cells (PMID:18844214).

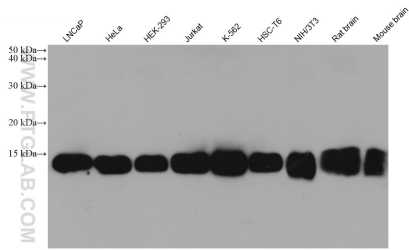
Storage

Storage:
Store at -80°C.
Storage Buffer:
PBS Only

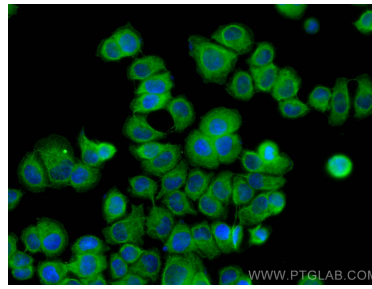
For technical support and original validation data for this product please contact:
T: 1 (888) 4PTGLAB (1-888-478-4522) (toll free in USA), or 1(312) 455-8498 (outside USA) E: proteintech@ptglab.com
W: ptglab.com

This product is exclusively available under Proteintech Group brand and is not available to purchase from any other manufacturer.

Selected Validation Data



Various lysates were subjected to SDS PAGE followed by western blot with 68164-1-Ig (TCEB1 antibody) at dilution of 1:10000 incubated at room temperature for 1.5 hours. This data was developed using the same antibody clone with 68164-1-PBS in a different storage buffer formulation.



Immunofluorescent analysis of (-20°C Methanol) fixed T-47D cells using TCEB1 antibody (68164-1-Ig, Clone: 2D6D8) at dilution of 1:800 and CoraLite® 488-Conjugated AffiniPure Goat Anti-Mouse IgG(H+L). This data was developed using the same antibody clone with 68164-1-PBS in a different storage buffer formulation.