

For Research Use Only

ERBB2IP Monoclonal antibody, PBS Only (Capture)



Catalog Number: 68159-1-PBS

Featured Product

Basic Information

Catalog Number: 68159-1-PBS	GenBank Accession Number: BC115012	Purification Method: Protein A purification
Size: 100ug, Concentration: 1mg/ml by Nanodrop;	GeneID (NCBI): 55914	CloneNo.: 1A8D4
Source: Mouse	UNIPROT ID: Q96RT1	
Isotype: IgG1	Full Name: erbb2 interacting protein	
Immunogen Catalog Number: AG18514	Calculated MW: 1412 aa, 158 kDa	
	Observed MW: 150-180 kDa	

Applications

Tested Applications:
WB, IF/ICC, Cytometric bead array, Indirect ELISA

Species Specificity:
human, mouse, rat

Product Information

68159-1-PBS targets ERBB2IP as part of a matched antibody pair:

MP51110-1: 68159-1-PBS capture and 68159-2-PBS detection (validated in Cytometric bead array)

Unconjugated mouse monoclonal antibody pair in PBS only (BSA and azide free) storage buffer at a concentration of 1 mg/mL, ready for conjugation.

This conjugation ready format makes antibodies ideal for use in many applications including: ELISAs, multiplex assays requiring matched pairs, mass cytometry, and multiplex imaging applications. Antibody use should be optimized by the end user for each application and assay.

Background Information

ERBB2IP is a cytoplasmic protein that contains leucine-rich repeats (LRR) and PSD95/Dlg1/zo-1 (PDZ) domain (thus named a LAP protein). ERBB2IP interacts, via its single PDZ domain, specifically with ErbB2, but not with ErbB3, ErbB4, or EGFR. It is colocalized with ErbB2 at the basolateral membranes of epithelial cells. In addition, ERBB2IP also interacts with PSD-95, Lano and with three p120-related catenins, eBPAG1 and the β 4 subunit of the α 6 β 4 integrin, two major components of hemidesmosomes. The molecular weight of ERBB2IP was predicted 150-180 kDa by Western Blot.(PMID: 25288731, PMID: 24252174, PMID: 19289088)

Storage

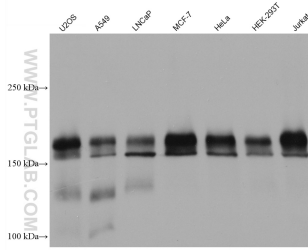
Storage:
Store at -80°C.

Storage Buffer:
PBS Only

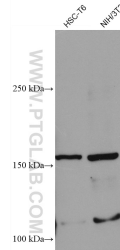
For technical support and original validation data for this product please contact:
T: 1 (888) 4PTGLAB (1-888-478-4522) (toll free in USA), or 1(312) 455-8498 (outside USA)
E: proteintech@ptglab.com
W: ptglab.com

This product is exclusively available under Proteintech Group brand and is not available to purchase from any other manufacturer.

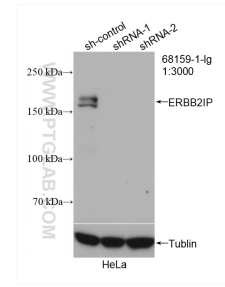
Selected Validation Data



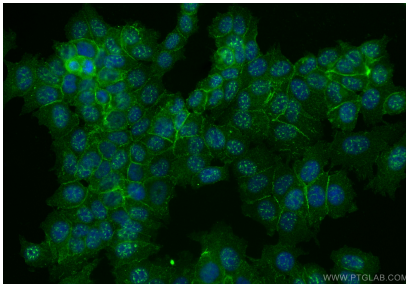
Various lysates were subjected to SDS PAGE followed by western blot with 68159-1-Ig (ERBB2IP antibody) at dilution of 1:10000 incubated at room temperature for 1.5 hours. This data was developed using the same antibody clone with 68159-1-PBS in a different storage buffer formulation.



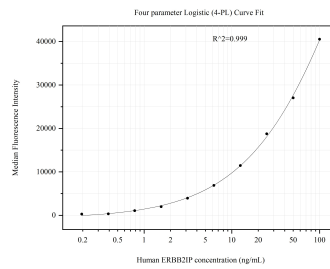
Various lysates were subjected to SDS PAGE followed by western blot with 68159-1-Ig (ERBB2IP antibody) at dilution of 1:10000 incubated at room temperature for 1.5 hours. This data was developed using the same antibody clone with 68159-1-PBS in a different storage buffer formulation.



WB result of ERBB2IP antibody (68159-1-Ig; 1:3000; incubated at room temperature for 1.5 hours) with sh-Control and sh-ERBB2IP transfected HeLa cells. This data was developed using the same antibody clone with 68159-1-PBS in a different storage buffer formulation.



Immunofluorescent analysis of (4% PFA) fixed MCF-7 cells using ERBB2IP antibody (68159-1-Ig, Clone: 1A8D4) at dilution of 1:1000 and CoraLite@488-Conjugated Goat Anti-Mouse IgG(H+L) (SA00013-1). This data was developed using the same antibody clone with 68159-1-PBS in a different storage buffer formulation.



Cytometric bead array standard curve of MP5110-1, ERBB2IP Monoclonal Matched Antibody Pair, PBS Only. Capture antibody: 68159-1-PBS. Detection antibody: 68159-2-PBS. Standard: Ag18514. Range: 0.195-100 ng/mL.