

For Research Use Only

# MYO1E Monoclonal antibody, PBS Only



Catalog Number: 68152-1-PBS

## Basic Information

<b>Catalog Number:</b> 68152-1-PBS	<b>GenBank Accession Number:</b> BC098392	<b>Purification Method:</b> Protein G purification
<b>Size:</b> 100ug , Concentration: 1mg/ml by Nanodrop;	<b>GeneID (NCBI):</b> 4643	<b>CloneNo.:</b> 2A12F5
<b>Source:</b> Mouse	<b>UNIPROT ID:</b> Q12965	
<b>Isotype:</b> IgG1	<b>Full Name:</b> myosin IE	
<b>Immunogen Catalog Number:</b> AG12244	<b>Calculated MW:</b> 1108 aa, 127 kDa	
	<b>Observed MW:</b> 120-150 kDa	

## Applications

**Tested Applications:**  
WB, Indirect ELISA

**Species Specificity:**  
Human, Mouse, Rat

## Background Information

MYO1E, also named as Myosin-Ie and MYO1C (distinct from the MYO1C gene located on chromosome 17), encodes a member of the nonmuscle class I myosins which are a subgroup of the unconventional myosin protein family. The unconventional myosin proteins function as actin-based molecular motors. This protein localizes to the cytoplasm and may be involved in intracellular movement and membrane trafficking. Mutations in this gene are the cause of focal segmental glomerulosclerosis-6.

## Storage

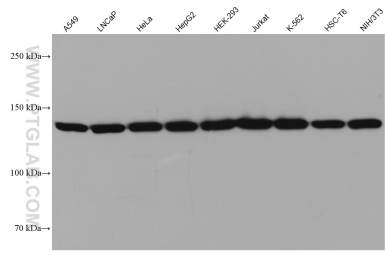
**Storage:**  
Store at -80°C.

**Storage Buffer:**  
PBS Only

For technical support and original validation data for this product please contact:  
T: 1 (888) 4PTGLAB (1-888-478-4522) (toll free in USA), or 1(312) 455-8498 (outside USA)      E: [proteintech@ptglab.com](mailto:proteintech@ptglab.com)  
W: [ptglab.com](http://ptglab.com)

**This product is exclusively available under Proteintech Group brand and is not available to purchase from any other manufacturer.**

## Selected Validation Data



Various lysates were subjected to SDS PAGE followed by western blot with 68152-1-Ig (MYO1E antibody) at dilution of 1:10000 incubated at room temperature for 1.5 hours. This data was developed using the same antibody clone with 68152-1-PBS in a different storage buffer formulation.