

For Research Use Only

WNK1 Monoclonal antibody, PBS Only



Catalog Number: 68149-1-PBS

Basic Information

Catalog Number: 68149-1-PBS	GenBank Accession Number: BC021121	Purification Method: Protein A purification
Size: 100ug , Concentration: 1mg/ml by Nanodrop;	GeneID (NCBI): 65125	CloneNo.: 1B6A10
Source: Mouse	UNIPROT ID: Q9H4A3	
Isotype: IgG2a	Full Name: WNK lysine deficient protein kinase 1	
Immunogen Catalog Number: AG28044	Calculated MW: 251 kDa	
	Observed MW: 250 kDa	

Applications

Tested Applications:
Indirect ELISA, WB

Species Specificity:
rat, mouse, human

Background Information

WNK kinase is a unique serine-threonine kinase in which the lysine (K) residue in the catalytic domain, that is found in the majority of kinases is not conserved. In mammals, there are four WNK kinase family members (WNK1-4). WNK1 has 6 isoforms, such as long form WNK1 (L-WNK1, 250 kDa, strong expression in dorsal root ganglia and spinal cord); kidney-specific isoform (KS-WNK1, 207 kDa, lacks a kinase domain). KS-WNK1 cannot phosphorylate substrates and instead interacts with and modulates the actions of other WNKs via a carboxyl terminal HQ domain.

Storage

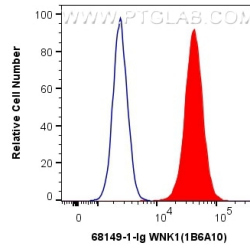
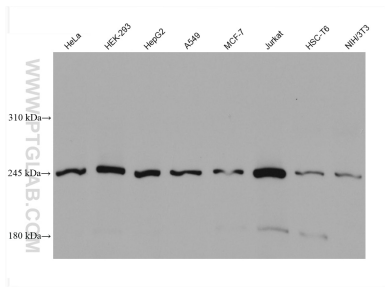
Storage:
Store at -80°C.

Storage Buffer:
PBS Only

For technical support and original validation data for this product please contact:
T: 1 (888) 4PTGLAB (1-888-478-4522) (toll free in USA), or 1(312) 455-8498 (outside USA) E: proteintech@ptglab.com
W: ptglab.com

This product is exclusively available under Proteintech Group brand and is not available to purchase from any other manufacturer.

Selected Validation Data



Various lysates were subjected to SDS PAGE followed by western blot with 68149-1-Ig (WNK1 antibody) at dilution of 1:2500 incubated at room temperature for 1.5 hours. This data was developed using the same antibody clone with 68149-1-PBS in a different storage buffer formulation.

1X10⁶ HEK-293T cells were intracellularly stained with 0.4 ug Anti-Human WNK1 (68149-1-Ig, Clone:1B6A10) and CoraLite®488-Conjugated AffiniPure Goat Anti-Mouse IgG(H+L) at dilution 1:1000 (red), or 0.4 ug Mouse IgG2a Isotype Control (C1.18.4) (65208-1-Ig, Clone: C1.18.4) (blue). Cells were fixed with 4% PFA and permeabilized with Flow Cytometry Perm Buffer (PF00011-C). This data was developed using the same antibody clone with 68149-1-PBS in a