

For Research Use Only

ARPC2 Monoclonal antibody, PBS Only



Catalog Number: 68145-1-PBS

Basic Information

Catalog Number: 68145-1-PBS	GenBank Accession Number: BC000590	Purification Method: Protein A purification
Size: 100ug , Concentration: 1mg/ml by Nanodrop;	GeneID (NCBI): 10109	CloneNo.: 1D8E3
Source: Mouse	UNIPROT ID: O15144	
Isotype: IgG1	Full Name: actin related protein 2/3 complex, subunit 2, 34kDa	
Immunogen Catalog Number: AG7082	Calculated MW: 34 kDa	
	Observed MW: 34 kDa	

Applications

Tested Applications:
WB, IHC, IF/ICC, Indirect ELISA

Species Specificity:
Human, mouse, rat, pig, rabbit

Storage

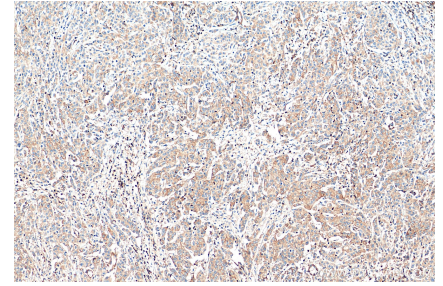
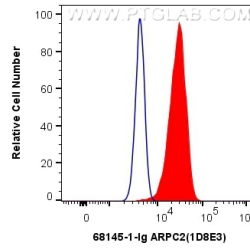
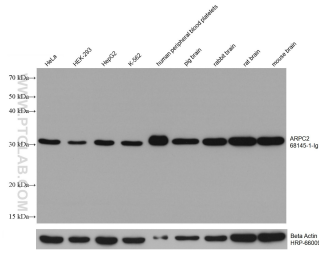
Storage:
Store at -80°C.

Storage Buffer:
PBS Only

For technical support and original validation data for this product please contact:
T: 1 (888) 4PTGLAB (1-888-478-4522) (toll free in USA), or 1(312) 455-8498 (outside USA) E: proteintech@ptglab.com
W: ptglab.com

This product is exclusively available under Proteintech Group brand and is not available to purchase from any other manufacturer.

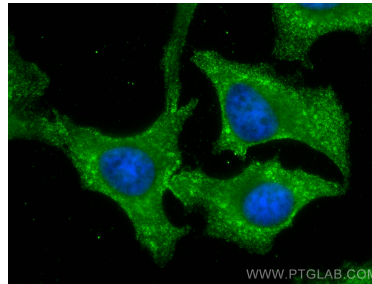
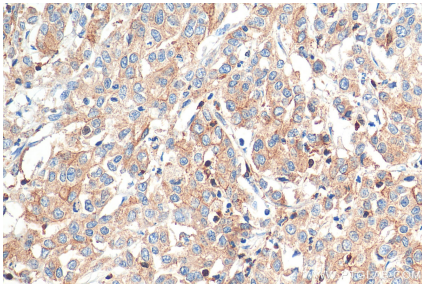
Selected Validation Data



Various lysates were subjected to SDS PAGE followed by western blot with 68145-1-Ig (ARPC2 antibody) at dilution of 1:20000 incubated at room temperature for 1.5 hours. The membrane was stripped and reblotted with HRP-conjugated Beta Actin Monoclonal antibody (HRP-66009) as loading control. This data was developed using the same antibody clone with 68145-1-PBS in a different storage buffer formulation.

1×10^6 HeLa cells were intracellularly stained with 0.4 ug Anti-Human ARPC2 (68145-1-Ig, Clone:1D8E3) and CoraLite®488-Conjugated AffiniPure Goat Anti-Mouse IgG(H+L) at dilution 1:1000 (red), or 0.4 ug Mouse IgG1 Isotype Control (MOPC-21) (65124-1-Ig, Clone: MOPC-21) (blue). Cells were fixed with 4% PFA and permeabilized with Flow Cytometry Perm Buffer (PF00011-C). This data was developed using the same antibody clone with 68145-1-PBS in a

Immunohistochemical analysis of paraffin-embedded human stomach cancer tissue slide using 68145-1-Ig (ARPC2 antibody) at dilution of 1:2000 (under 10x lens). Heat mediated antigen retrieval with Tris-EDTA buffer (pH 9.0). This data was developed using the same antibody clone with 68145-1-PBS in a different storage buffer formulation.



Immunohistochemical analysis of paraffin-embedded human stomach cancer tissue slide using 68145-1-Ig (ARPC2 antibody) at dilution of 1:2000 (under 40x lens). Heat mediated antigen retrieval with Tris-EDTA buffer (pH 9.0). This data was developed using the same antibody clone with 68145-1-PBS in a different storage buffer formulation.

Immunofluorescent analysis of (-20°C Methanol) fixed HeLa cells using ARPC2 antibody (68145-1-Ig, Clone: 1D8E3) at dilution of 1:2000 and CoraLite®488-Conjugated AffiniPure Goat Anti-Mouse IgG(H+L). This data was developed using the same antibody clone with 68145-1-PBS in a different storage buffer formulation.