

For Research Use Only

UBE2D1/2/3/4 Monoclonal antibody, PBS Only



Catalog Number: 68138-1-PBS

Basic Information

Catalog Number:

68138-1-PBS

Size:

100ug, Concentration: 1 mg/ml by
Nanodrop;

Source:

Mouse

Isotype:

IgG1

Immunogen Catalog Number:

AG2278

GenBank Accession Number:

BC003395

GeneID (NCBI):

7323

UNIPROT ID:

P61077

Full Name:

ubiquitin-conjugating enzyme E2D3
(UBC4/5 homolog, yeast)

Calculated MW:

17 kDa

Observed MW:

17 kDa

Purification Method:

Protein A purification

CloneNo.:

1C7D12

Applications

Tested Applications:

WB, IF, Indirect ELISA

Species Specificity:

Human, Mouse, Rat

Background Information

Ubiquitination is a post-translational modification pathway or is part of the specific protein-degradation pathway by the 26S proteasome. Ubiquitination of a target protein involves multistep enzymatic reaction catalyzed by a cascade of enzymes including Ub-activating enzymes (E1s), Ub-conjugating enzymes (E2s) and Ub ligases (E3s) (PMID: 23542885). UBE2D family, which has 4 members named as UBE2D1/2/3/4, is an E2 ubiquitin-conjugating enzyme family in the ubiquitin-proteasome system. This antibody can recognize all the four members of UBE2D due to the high homology.

Storage

Storage:

Store at -80°C.

Storage Buffer:

PBS Only

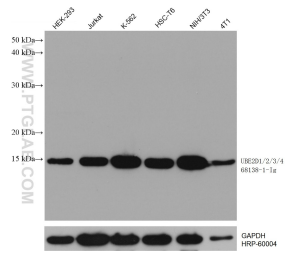
For technical support and original validation data for this product please contact:

T: 1 (888) 4PTGLAB (1-888-478-4522) (toll free
in USA), or 1(312) 455-8498 (outside USA)

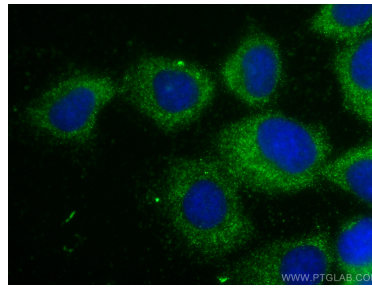
E: proteintech@ptglab.com
W: ptglab.com

This product is exclusively available under Proteintech Group brand and is not available to purchase from any other manufacturer.

Selected Validation Data



Various lysates were subjected to SDS PAGE followed by western blot with 68138-1-Ig (UBE2D3 antibody) at dilution of 1:10000 incubated at room temperature for 1.5 hours. The membrane was stripped and reblotted with HRP-conjugated GAPDH Monoclonal antibody (HRP-60004) as loading control. This data was developed using the same antibody clone with 68138-1-PBS in a different storage buffer formulation.



Immunofluorescent analysis of (-20°C Methanol) fixed A431 cells using UBE2D1/2/3/4 antibody (68138-1-Ig, Clone: 1C7D12) at dilution of 1:800 and CoraLite®488-Conjugated AffiniPure Goat Anti-Mouse IgG(H+L). This data was developed using the same antibody clone with 68138-1-PBS in a different storage buffer formulation.