

For Research Use Only

# LPIN1 Monoclonal antibody, PBS Only



Catalog Number: 68124-1-PBS

## Basic Information

<b>Catalog Number:</b> 68124-1-PBS	<b>GenBank Accession Number:</b> BC030537	<b>Purification Method:</b> Protein A purification
<b>Size:</b> 100ug , Concentration: 1 mg/ml by Nanodrop;	<b>GeneID (NCBI):</b> 23175	<b>CloneNo.:</b> 3G11B10
<b>Source:</b> Mouse	<b>UNIPROT ID:</b> Q14693	
<b>Isotype:</b> IgG2a	<b>Full Name:</b> lipin 1	
<b>Immunogen Catalog Number:</b> AG25813	<b>Calculated MW:</b> 890 aa, 99 kDa	
	<b>Observed MW:</b> 130 kDa	

## Applications

**Tested Applications:**  
WB, IF, IHC, Indirect ELISA

**Species Specificity:**  
Human, Rat, Mouse

## Background Information

LPIN1, also named as KIAA0188, belongs to the lipin family. It is a magnesium-dependent phosphatidate phosphatase enzyme which catalyzes the conversion of phosphatidic acid to diacylglycerol during triglyceride, phosphatidylcholine and phosphatidylethanolamine biosynthesis and therefore controls the metabolism of fatty acids at different levels. LPIN1 has a molecular weight of about 99 kDa but predicted bands around 130 kDa. (PMID:20231281, PMID:29765047).

## Storage

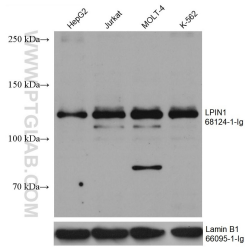
**Storage:**  
Store at -80°C.

**Storage Buffer:**  
PBS Only

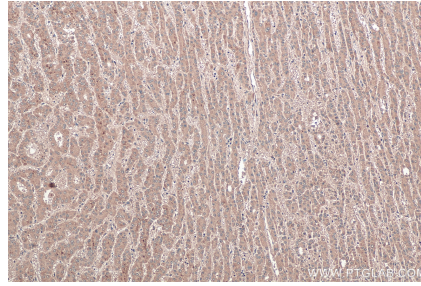
For technical support and original validation data for this product please contact:  
T: 1 (888) 4PTGLAB (1-888-478-4522) (toll free in USA), or 1(312) 455-8498 (outside USA)      E: proteintech@ptglab.com  
W: ptglab.com

This product is exclusively available under Proteintech Group brand and is not available to purchase from any other manufacturer.

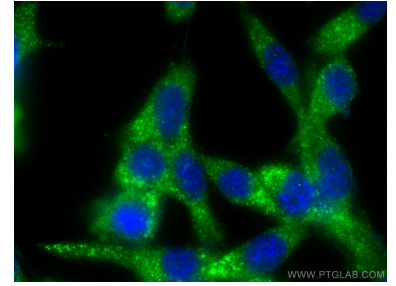
## Selected Validation Data



Various lysates were subjected to SDS PAGE followed by western blot with 68124-1-Ig (LPIN1 antibody) at dilution of 1:5000 incubated at room temperature for 1.5 hours. The membrane was stripped and reblotted with Lamin B1 Monoclonal antibody (66095-1-Ig) as loading control. This data was developed using the same antibody clone with 68124-1-PBS in a different storage buffer formulation.



Immunohistochemical analysis of paraffin-embedded human liver cancer tissue slide using 68124-1-Ig (LPIN1 antibody) at dilution of 1:4000 (under 10x lens). Heat mediated antigen retrieval with Tris-EDTA buffer (pH 9.0). This data was developed using the same antibody clone with 68124-1-PBS in a different storage buffer formulation.



Immunofluorescent analysis of (-20°C Methanol) fixed NIH/3T3 cells using LPIN1 antibody (68124-1-Ig, Clone: 3G11B10) at dilution of 1:800 and CoraLite®488-Conjugated AffiniPure Goat Anti-Mouse IgG(H+L). This data was developed using the same antibody clone with 68124-1-PBS in a different storage buffer formulation.