

For Research Use Only

ADAM8 Monoclonal antibody, PBS Only (Detector)

Catalog Number: 68113-3-PBS



Basic Information

Catalog Number: 68113-3-PBS	GenBank Accession Number: BC115404	Purification Method: Protein G purification
Size: 100ug, Concentration: 1mg/ml by Nanodrop;	GeneID (NCBI): 101	CloneNo.: 2E3F3
Source: Mouse	UNIPROT ID: P78325	Affinity: $K_D = 9.04 \times 10^{-11}M$
Isotype: IgG1	Full Name: ADAM metalloproteinase domain 8	$K_{off} = 4.69 \times 10^{-6}M$
Immunogen Catalog Number: AG17262	Calculated MW: 824 aa, 89 kDa	$K_{on} = 5.18 \times 10^4M$

Applications

Tested Applications:
Cytometric bead array, Sandwich ELISA, Indirect ELISA, Sample test

Species Specificity:
human

Product Information

68113-3-PBS targets ADAM8 as part of a matched antibody pair:

MP50122-1: 68113-2-PBS capture and 68113-3-PBS detection (validated in Cytometric bead array, Sandwich ELISA)

Unconjugated mouse monoclonal antibody pair in PBS only (BSA and azide free) storage buffer at a concentration of 1 mg/mL, ready for conjugation.

This conjugation ready format makes antibodies ideal for use in many applications including: ELISAs, multiplex assays requiring matched pairs, mass cytometry, and multiplex imaging applications. Antibody use should be optimized by the end user for each application and assay.

Storage

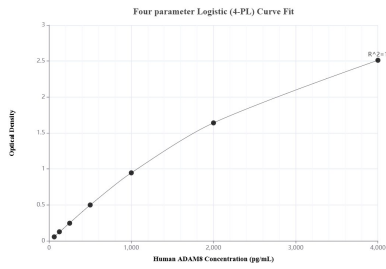
Storage:
Store at -80°C.

Storage Buffer:
PBS Only

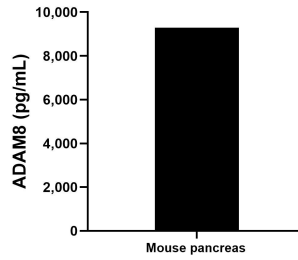
For technical support and original validation data for this product please contact:
T: 1 (888) 4PTGLAB (1-888-478-4522) (toll free in USA), or 1(312) 455-8498 (outside USA) E: proteintech@ptglab.com
W: ptglab.com

This product is exclusively available under Proteintech Group brand and is not available to purchase from any other manufacturer.

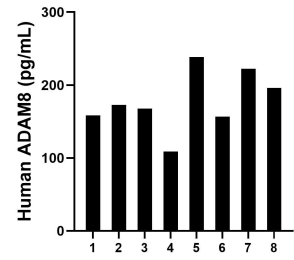
Selected Validation Data



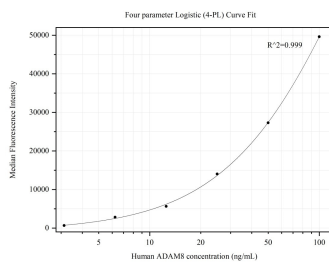
Sandwich ELISA standard curve of MP50122-1, Human ADAM8 Monoclonal Matched Antibody Pair - PBS only. 68113-2-PBS was coated to a plate as the capture antibody and incubated with serial dilutions of standard Ag17262. 68113-3-PBS was HRP conjugated as the detection antibody. Range: 62.5-4000 pg/mL



The mean ADAM8 concentration was determined to be 9,287.6 pg/mL in mouse pancreas cell extract based on a 2.3 mg/mL extract load.



Serum of eight individual healthy human donors was measured. The ADAM8 concentration of detected samples was determined to be 177.6 pg/mL with a range of 108.9-238.5 pg/mL



Cytometric bead array standard curve of MP50122-1, ADAM8 Monoclonal Matched Antibody Pair, PBS Only. Capture antibody: 68113-2-PBS. Detection antibody: 68113-3-PBS. Standard: Ag17262. Range: 3.125-100 ng/mL