

For Research Use Only

SLC25A16 Monoclonal antibody, PBS Only



Catalog Number: 68107-1-PBS

Basic Information

Catalog Number: 68107-1-PBS	GenBank Accession Number: BC030266	Purification Method: Protein G purification
Size: 100ug , Concentration: 1 mg/ml by Nanodrop;	GeneID (NCBI): 8034	CloneNo.: 3F10C8
Source: Mouse	UNIPROT ID: P16260	
Isotype: IgG1	Full Name: solute carrier family 25 (mitochondrial carrier; Graves disease autoantigen), member 16	
Immunogen Catalog Number: AG4891	Calculated MW: 36 kDa	
	Observed MW: 33 kDa	

Applications

Tested Applications:
WB, Indirect ELISA

Species Specificity:
Human

Background Information

GDA, also named as SLC25A16, GDC, ML7, hML7, belongs to the mitochondrial carrier family. GDA encodes a protein that contains three tandemly repeated mitochondrial carrier protein domains. The encoded protein is localized in the mitochondrion inner membrane and facilitates the rapid transport and exchange of molecules between the cytosol and the mitochondrial matrix space. This gene has been associated with Graves' disease (PMID:11158296, 1457817).

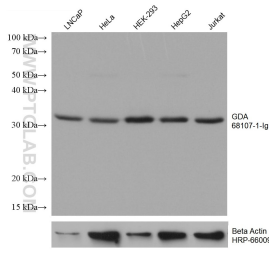
Storage

Storage:
Store at -80°C.
Storage Buffer:
PBS Only

For technical support and original validation data for this product please contact:
T: 1 (888) 4PTGLAB (1-888-478-4522) (toll free in USA), or 1(312) 455-8498 (outside USA) E: proteintech@ptglab.com
W: ptglab.com

This product is exclusively available under Proteintech Group brand and is not available to purchase from any other manufacturer.

Selected Validation Data



Various lysates were subjected to SDS PAGE followed by western blot with 68107-1-Ig (GDA antibody) at dilution of 1:10000 incubated at room temperature for 1.5 hours. The membrane was stripped and reblotted with HRP-conjugated Beta Actin Monoclonal antibody (HRP-66009) as loading control. This data was developed using the same antibody clone with 68107-1-PBS in a different storage buffer formulation.