

For Research Use Only

# NLRP3 Monoclonal antibody, PBS Only (Detector)

Catalog Number: 68102-2-PBS



## Basic Information

<b>Catalog Number:</b> 68102-2-PBS	<b>GenBank Accession Number:</b> NM_001079821	<b>Purification Method:</b> Protein A purification
<b>Size:</b> 100ug , Concentration: 1 mg/ml by Nanodrop;	<b>GeneID (NCBI):</b> 114548	<b>CloneNo.:</b> 4D4C1
<b>Source:</b> Mouse	<b>UNIPROT ID:</b> Q96P20	
<b>Isotype:</b> IgG2a	<b>Full Name:</b> NLR family, pyrin domain containing 3	
<b>Immunogen Catalog Number:</b> AG26289	<b>Calculated MW:</b> 118 kDa	

## Applications

**Tested Applications:**  
Cytometric bead array, Sandwich ELISA, Indirect ELISA, Sample test

**Species Specificity:**  
human

## Product Information

68102-2-PBS targets NLRP3 as part of a matched antibody pair:

MP50203-1: 68102-1-PBS capture and 68102-2-PBS detection (validated in Cytometric bead array, Sandwich ELISA)

Unconjugated mouse monoclonal antibody pair in PBS only (BSA and azide free) storage buffer at a concentration of 1 mg/mL, ready for conjugation.

This conjugation ready format makes antibodies ideal for use in many applications including: ELISAs, multiplex assays requiring matched pairs, mass cytometry, and multiplex imaging applications. Antibody use should be optimized by the end user for each application and assay.

## Storage

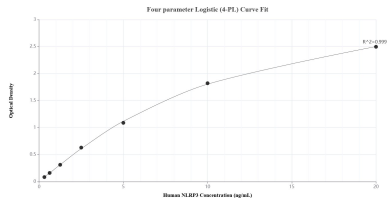
**Storage:**  
Store at -80°C.

**Storage Buffer:**  
PBS Only

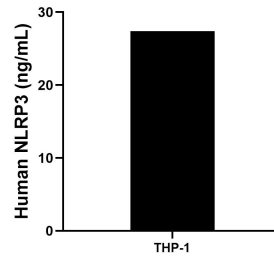
For technical support and original validation data for this product please contact:  
T: 1 (888) 4PTGLAB (1-888-478-4522) (toll free in USA), or 1(312) 455-8498 (outside USA)      E: proteintech@ptglab.com  
W: ptglab.com

This product is exclusively available under Proteintech Group brand and is not available to purchase from any other manufacturer.

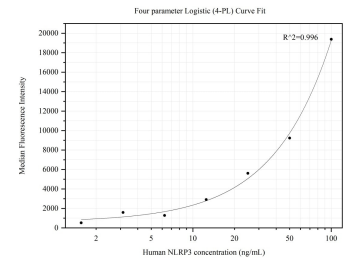
## Selected Validation Data



Sandwich ELISA standard curve of MP50203-1, Human NLRP3 Monoclonal Matched Antibody Pair - PBS only. 68102-1-PBS was coated to a plate as the capture antibody and incubated with serial dilutions of standard Ag26289. 68102-2-PBS was HRP conjugated as the detection antibody. Range: 0.313-20 ng/mL



The mean NLRP3 concentration was determined to be 27.37 ng/mL in THP-1 cell extract based on a 1.50 mg/mL extract load.



Cytometric bead array standard curve of MP50203-1, NLRP3 Monoclonal Matched Antibody Pair, PBS Only. Capture antibody: 68102-1-PBS. Detection antibody: 68102-2-PBS. Standard: Ag26289. Range: 1.563-100 ng/mL