

For Research Use Only

PRAME Monoclonal antibody, PBS Only



Catalog Number: 68097-1-PBS

Featured Product

Basic Information

Catalog Number:

68097-1-PBS

Size:

100ug, Concentration: 1 mg/ml by Nanodrop;

Source:

Mouse

Isotype:

IgG2b

Immunogen Catalog Number:

AG1906

GenBank Accession Number:

BC014074

GeneID (NCBI):

23532

UNIPROT ID:

P78395

Full Name:

preferentially expressed antigen in melanoma

Calculated MW:

509 aa, 58 kDa

Observed MW:

50 kDa

Purification Method:

Protein A purification

CloneNo.:

1E9G9

Applications

Tested Applications:

WB, IF, Indirect ELISA

Species Specificity:

Human, mouse, rat

Background Information

The PRAME (preferentially expressed antigen of melanoma) gene was previously shown to be overexpressed in ovarian/primary peritoneal serous carcinoma compared with malignant mesothelioma using gene expression arrays. It is considered a melanocyte differentiation antigen which is overexpressed in both solid and hematologic tumors. In normal tissue, a very low level of PRAME expression is found in normal testis, adrenals, ovary and endometrium. A high level of PRAME expression has been reported for several solid tumors, including ovarian cancer, breast cancer, lung cancer and melanomas, medulloblastoma, sarcomas, head and neck cancers, neuroblastoma, renal cancer, and Wilms' tumor. As a nuclear transcriptional repressor protein, PRAME binds to retinoic acid receptor α , thereby inhibiting retinoic acid induced differentiation, growth arrest, and apoptosis.

Storage

Storage:

Store at -80°C .

Storage Buffer:

PBS Only

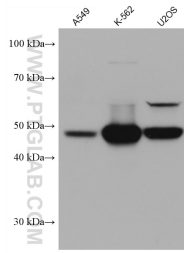
For technical support and original validation data for this product please contact:

T: 1 (888) 4PTGLAB (1-888-478-4522) (toll free in USA), or 1(312) 455-8498 (outside USA)

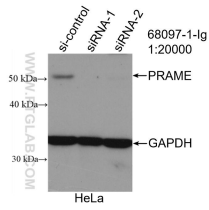
E: proteintech@ptglab.com
W: ptglab.com

This product is exclusively available under Proteintech Group brand and is not available to purchase from any other manufacturer.

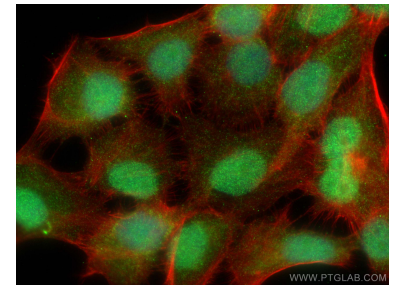
Selected Validation Data



Various lysates were subjected to SDS PAGE followed by western blot with 68097-1-Ig (PRAME antibody) at dilution of 1:100000 incubated at room temperature for 1.5 hours. This data was developed using the same antibody clone with 68097-1-PBS in a different storage buffer formulation.



WB result of PRAME antibody (68097-1-Ig; 1:20000; incubated at room temperature for 1.5 hours) with sh-Control and sh-PRAME transfected HeLa cells. This data was developed using the same antibody clone with 68097-1-PBS in a different storage buffer formulation.



Immunofluorescent analysis of (4% PFA) fixed HaCaT cells using PRAME antibody (68097-1-Ig, Clone: 1E9G9) at dilution of 1:800 and CoraLite®488-Conjugated AffiniPure Goat Anti-Mouse IgG(H+L), CL594-phalloidin (red). This data was developed using the same antibody clone with 68097-1-PBS in a different storage buffer formulation.