

For Research Use Only

Annexin VI Monoclonal antibody, PBS Only



Catalog Number: 68086-1-PBS

Basic Information

Catalog Number: 68086-1-PBS	GenBank Accession Number: BC017046	Purification Method: Protein G purification
Size: 100ug, Concentration: 1mg/ml by Nanodrop;	GeneID (NCBI): 309	CloneNo.: 2H7G7
Source: Mouse	UNIPROT ID: P08133	
Isotype: IgG1	Full Name: annexin A6	
Immunogen Catalog Number: AG3263	Calculated MW: 673 aa, 76 kDa	
	Observed MW: 67 kDa	

Applications

Tested Applications:
Indirect ELISA, IF/ICC, WB

Species Specificity:
rabbit, pig, rat, mouse, human

Background Information

ANXA6, also called CBP68, or 67 kDa calelectrin, belongs to a family of calcium-dependent membrane and phospholipid binding proteins. Several members of the annexin family have been implicated in membrane-related events along exocytotic and endocytotic pathways. The annexin VI gene is approximately 60 kbp long and contains 26 exons. It encodes a protein of about 68 kDa that consists of eight 68-amino acid repeats separated by linking sequences of variable lengths. It is highly similar to human annexins I and II sequences, each of which contain four such repeats. Annexin VI has been implicated in mediating the endosome aggregation and vesicle fusion in secreting epithelia during exocytosis.

Storage

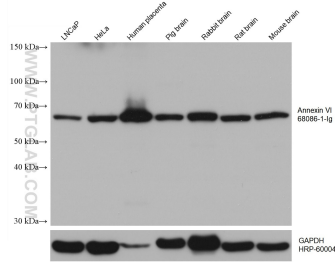
Storage:
Store at -80°C.

Storage Buffer:
PBS Only

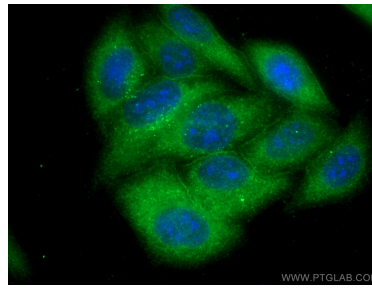
For technical support and original validation data for this product please contact:
T: 1 (888) 4PTGLAB (1-888-478-4522) (toll free in USA), or 1(312) 455-8498 (outside USA) E: proteintech@ptglab.com
W: ptglab.com

This product is exclusively available under Proteintech Group brand and is not available to purchase from any other manufacturer.

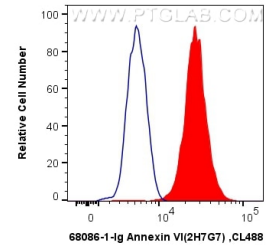
Selected Validation Data



Various lysates were subjected to SDS PAGE followed by western blot with 68086-1-Ig (Annexin VI antibody) at dilution of 1:5000 incubated at room temperature for 1.5 hours. The membrane was stripped and reblotted with HRP-conjugated GAPDH Monoclonal antibody (HRP-60004) as loading control. This data was developed using the same antibody clone with 68086-1-PBS in a different storage buffer formulation.



Immunofluorescent analysis of (-20°C Methanol) fixed HepG2 cells using Annexin VI antibody (68086-1-Ig, Clone: 2H7G7) at dilution of 1:400 and CoraLite®488-Conjugated AffiniPure Goat Anti-Mouse IgG(H+L). This data was developed using the same antibody clone with 68086-1-PBS in a different storage buffer formulation.



1X10⁶ K-562 cells were intracellularly stained with 0.4 ug Anti-Human Annexin VI (68086-1-Ig, Clone:2H7G7) and CoraLite®488-Conjugated AffiniPure Goat Anti-Mouse IgG(H+L) at dilution 1:1000 (red), or 0.4 ug Mouse IgG1 Isotype Control (MOPC-21) (65124-1-Ig, Clone: MOPC-21) (blue). Cells were fixed with 4% PFA and permeabilized with Flow Cytometry Perm Buffer (PF00011-C). This data was developed using the same antibody clone with 68086-1-PBS in a