

For Research Use Only

DPEP1 Monoclonal antibody, PBS Only

Catalog Number: 68081-1-PBS



Basic Information

Catalog Number:

68081-1-PBS

Size:

100ug, Concentration: 1mg/ml by
Nanodrop;

Source:

Mouse

Isotype:

IgG2a

Immunogen Catalog Number:

AG14591

GenBank Accession Number:

BC017023

GeneID (NCBI):

1800

UNIPROT ID:

P16444

Full Name:

dipeptidase 1 (renal)

Calculated MW:

411 aa, 46 kDa

Observed MW:

46 kDa

Purification Method:

Protein A purification

CloneNo.:

2B4F4

Applications

Tested Applications:

WB, IHC, IF-P, ELISA

Species Specificity:

human, mouse, rat, pig, rabbit

Storage

Storage:

Store at -80°C.

Storage Buffer:

PBS Only

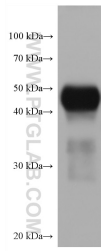
For technical support and original validation data for this product please contact:

T: 1 (888) 4PTGLAB (1-888-478-4522) (toll free
in USA), or 1(312) 455-8498 (outside USA)

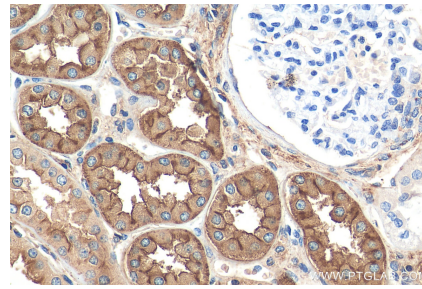
E: proteintech@ptglab.com
W: ptglab.com

This product is exclusively available under Proteintech Group brand and is not available to purchase from any other manufacturer.

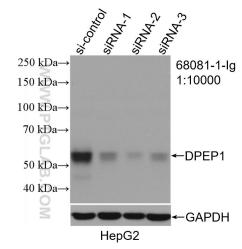
Selected Validation Data



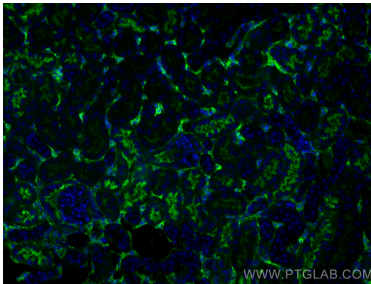
human testis tissue were subjected to SDS PAGE followed by western blot with 68081-1-Ig (DPEP1 antibody) at dilution of 1:10000 incubated at room temperature for 1.5 hours. This data was developed using the same antibody clone with 68081-1-PBS in a different storage buffer formulation.



Immunohistochemical analysis of paraffin-embedded human kidney tissue slide using 68081-1-Ig (DPEP1 antibody) at dilution of 1:1000 (under 40x lens). Heat mediated antigen retrieval with Tris-EDTA buffer (pH 9.0). This data was developed using the same antibody clone with 68081-1-PBS in a different storage buffer formulation.



WB result of DPEP1 antibody (68081-1-Ig; 1:10000; incubated at room temperature for 1.5 hours) with sh-Control and sh-DPEP1 transfected HepG2 cells. This data was developed using the same antibody clone with 68081-1-PBS in a different storage buffer formulation.



Immunofluorescent analysis of (4% PFA) fixed mouse kidney tissue using DPEP1 antibody (68081-1-Ig, Clone: 2B4F4) at dilution of 1:400 and CoraLite®488-Conjugated AffiniPure Goat Anti-Mouse IgG(H+L). This data was developed using the same antibody clone with 68081-1-PBS in a different storage buffer formulation.